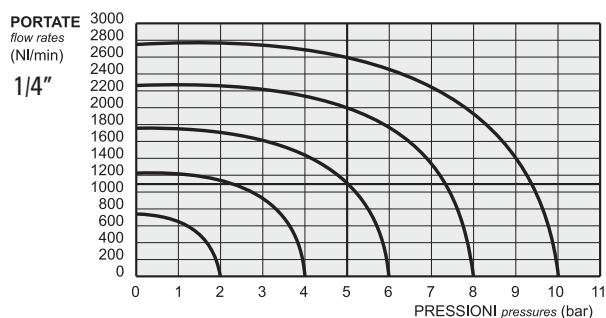
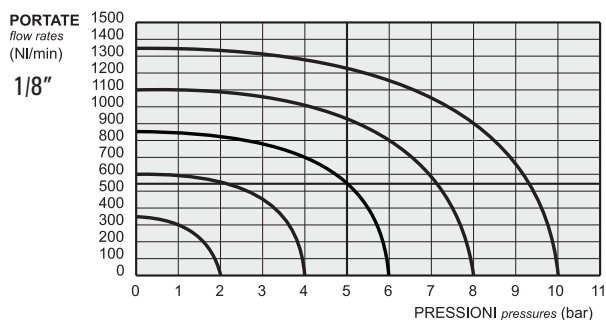
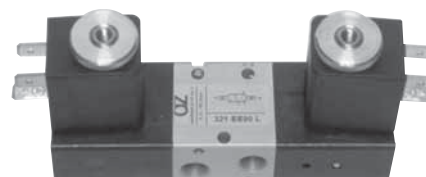


valvole ad azionamento elettropneumatico

solenoid actuated valves



- Valvole a spola 3/2-5/2-5/3 con attacchi filettati G1/8"-G1/4"
3/2-5/2-5/3 spool valves with G1/8"-G1/4" threaded ports
- Montaggio in linea, su collettori multipli o su basi manifold
Installation in-line, on gang or modular manifolds
- Comandi elettrici con azionamento manuale bistabile
Solenoid pilots with detented manual override as standard
- A richiesta versione a basso assorbimento 1.5W
On request with low consumption 1.5W
- Esecuzioni speciali a richiesta
Special versions on request



Materiali

Corpo: alluminio 11S

Comando e fondello: tecnopolimero (*)

Molle: INOX

Guarnizioni: NBR

Spola: alluminio nichelato

Parti interne: ottone OT58

Materials

Body: aluminium 11S

End cups: technopolymer (*)

Springs: stainless steel

Seals: NBR

Spool: nickel plated aluminium

Internal parts: brass OT58

(*) Su richiesta e dietro supplemento di prezzo, le valvole sono fornibili con corpo, comando e fondello interamente in alluminio. Alcune valvole, come di seguito specificato, sono disponibili solo nella versione in alluminio. Le valvole ATEX sono solo in alluminio.

Le parti in tecnopolimero recano impresso il logo

(*) On request and upon extra charge, the valves are available also with body and end caps entirely in aluminium. Some valves, as specified in the next pages, are available only in the aluminium version. ATEX valves are only in aluminium.

The parts in technopolymer are marked with the logo

Tempi di risposta - response times

	1/8"	1/4"
monostabile <i>mono-stable</i>	TRA (14): 15 ms TRR (12): 35 ms	TRA (14): 19 ms TRR (12): 45 ms
bistabile <i>bi-stable</i>	TRA (14): 20 ms TRR (12): 20 ms	TRA (14): 22 ms TRR (12): 22 ms

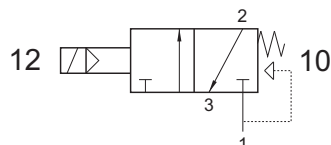
I prodotti di seguito indicati sono venduti senza bobine, da acquistarsi separatamente (vedi pag. 185).
The following listed products are sold without coils, which are bought separately (refer to page 185).

Diametro nominale <i>Nominal orifice</i>		1/8": 5 mm 1/4": 7.5 mm	
Temperatura di esercizio <i>Temperature range</i>		max +60°C	
Pressione di esercizio <i>Working pressure</i>	al. interna monost. [monost. internal air supply]	al. interna bist. [bi-stable internal air supply]	alim. separata [separate air supply]
	2.5 ... 10 bar 0.25 ... 1 MPa	1 ... 10 bar 0.1 ... 1 MPa	-0.9 ... 10 bar -0.09 ... 1 MPa
Pressione di azionamento (per alimentazione separata) <i>Actuating pressure (for separate air supply)</i>		monostabile [mono-stable]	bistabile [bi-stable]
		2.5 ... 10 bar 0.25 ... 1 MPa	1 ... 10 bar 0.1 ... 1 MPa
Fluido <i>Fluid</i>		Aria filtrata 50µ con o senza lubrificazione 50µ filtered, lubricated or non lubricated air	

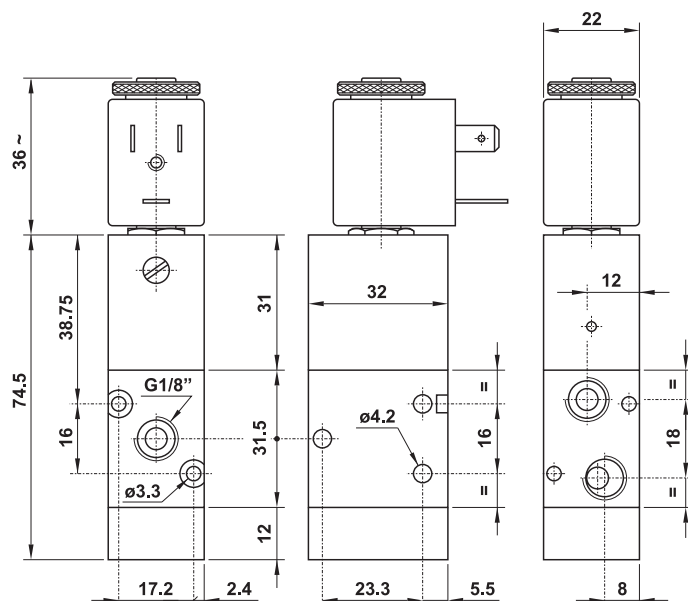
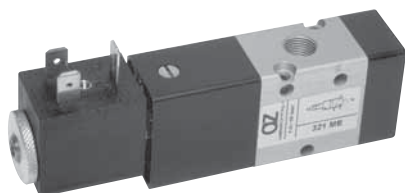
321 ME

3/2 1/8" NC comando elettrico - ritorno a molla

3/2 1/8" NC solenoid pilot - spring return



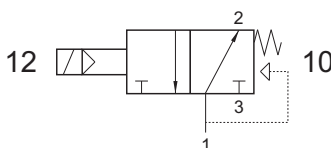
Non può essere utilizzata come valvola normalmente aperta.
It cannot be used as normally open valve.



321 MEA

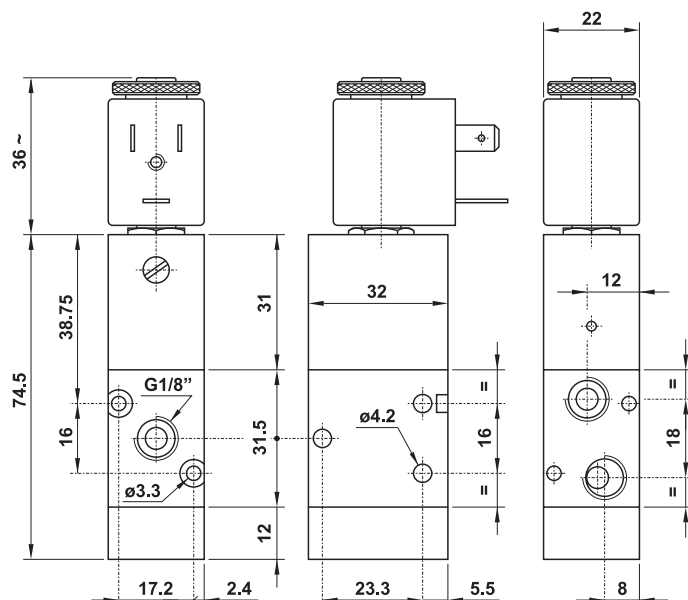
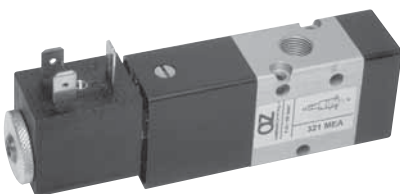
3/2 1/8" NA comando elettrico - ritorno a molla

3/2 1/8" NO solenoid pilot - spring return



Non può essere utilizzata come valvola normalmente chiusa.
It cannot be used as normally closed valve.

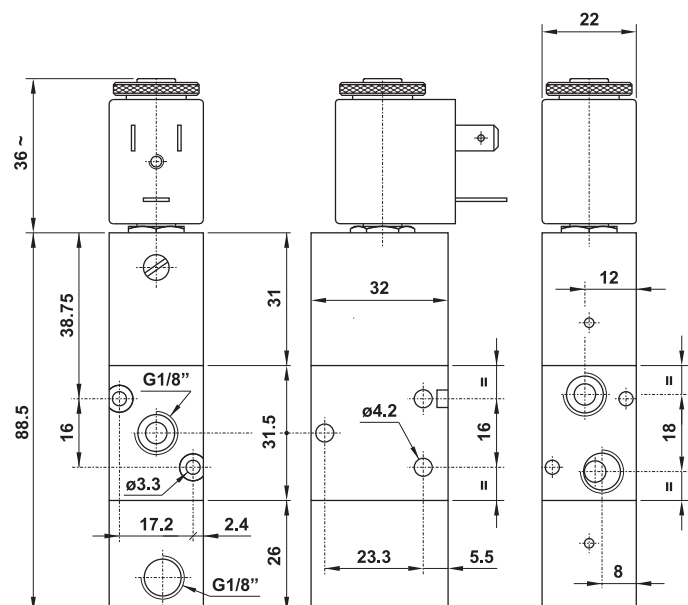
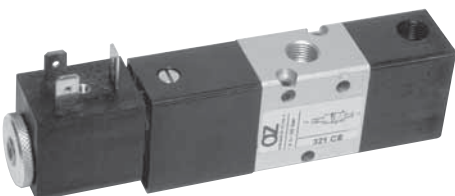
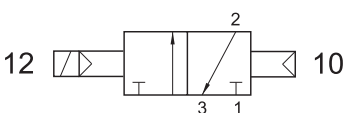
SOLO VERSIONE IN ALLUMINIO
ONLY ALUMINIUM VERSION



321 CE

3/2 1/8" comando elettrico - ritorno a comando pneumatico

3/2 1/8" solenoid pilot - separate pneumatically piloted return



valvole ad azionamento elettropneumatico

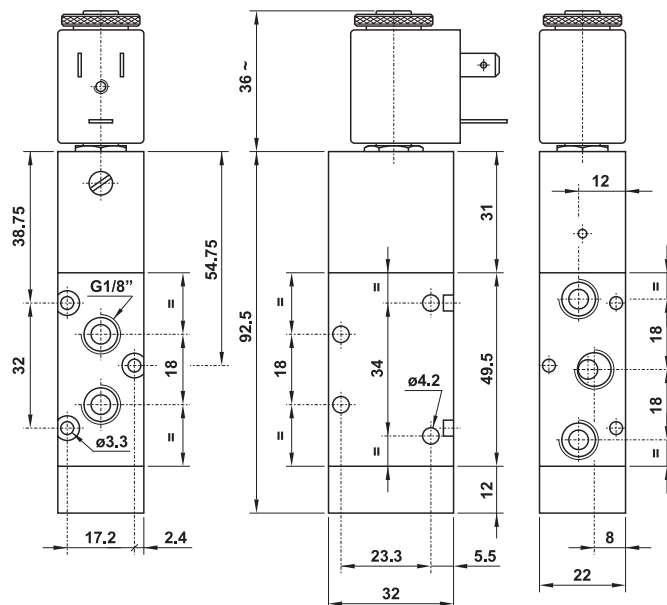
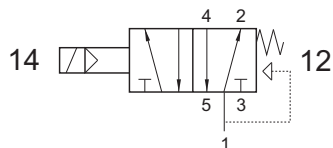
solenoid actuated valves



521 ME

5/2 1/8" comando elettrico - ritorno a molla

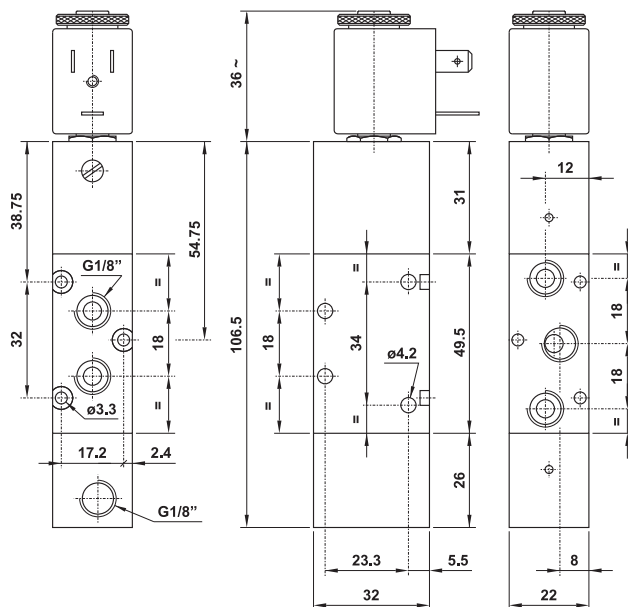
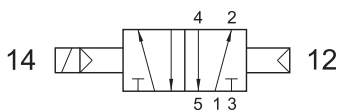
5/2 1/8" solenoid pilot - spring return



521 CE

5/2 1/8" comando elettrico - ritorno a comando pneumatico

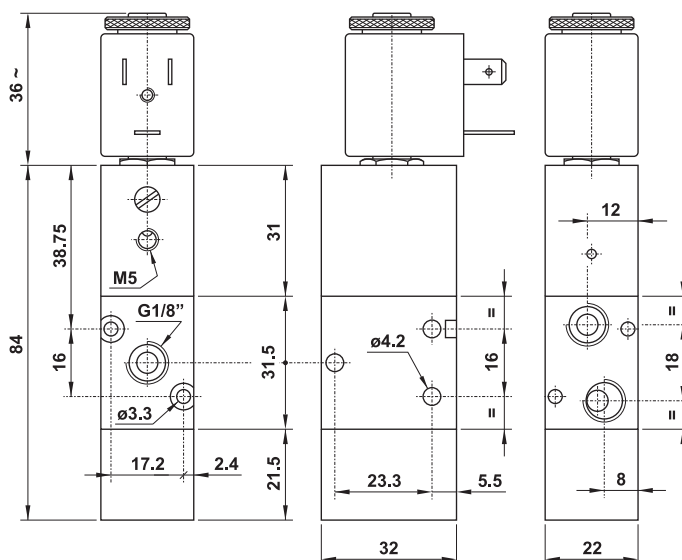
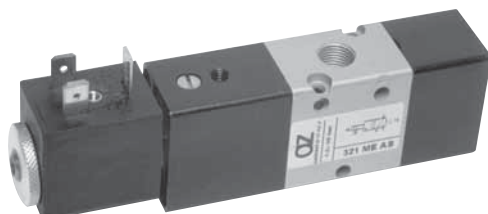
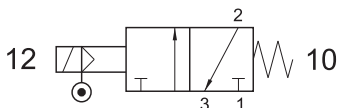
5/2 1/8" solenoid pilot - separate pneumatically piloted return



321 ME AS

3/2 1/8" comando elettrico alimentazione separata - ritorno a molla

3/2 1/8" solenoid pilot with separate air supply - spring return



valvole ad azionamento elettropneumatico

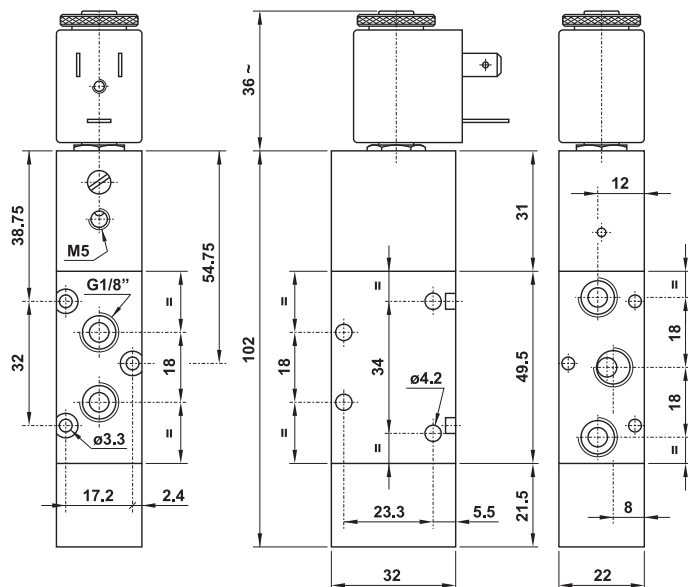
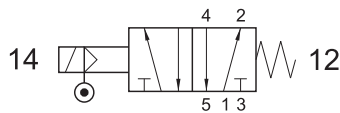
solenoid actuated valves



521 ME AS

5/2 1/8" comando elettrico alimentazione separata - ritorno a molla

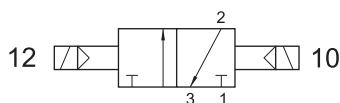
5/2 1/8" solenoid pilot with separate air supply - spring return



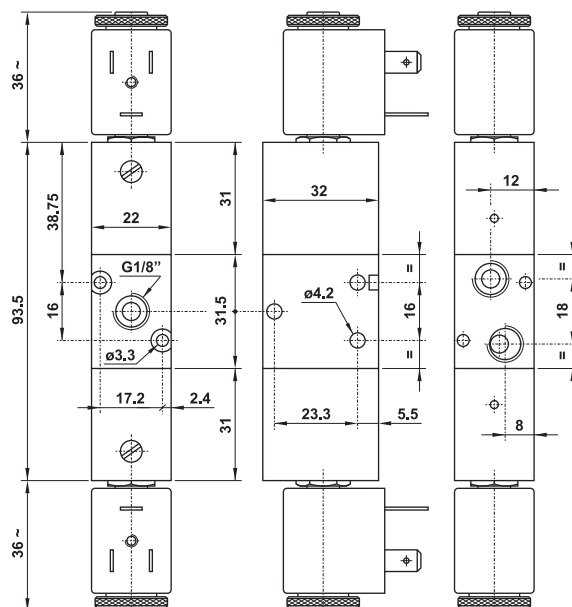
321 EE

3/2 1/8" doppio comando elettrico

3/2 1/8" double solenoid pilot



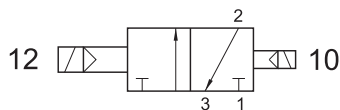
SOLO VERSIONE IN ALLUMINIO
ONLY ALUMINIUM VERSION



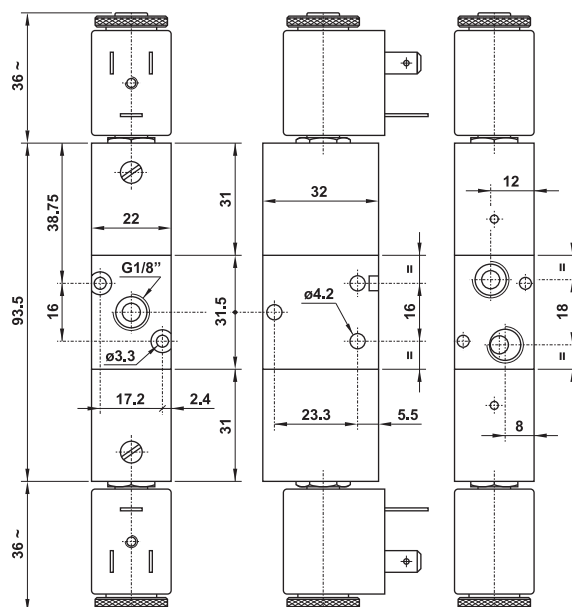
321 EED

3/2 1/8" doppio comando elettrico - con differenziale

3/2 1/8" double solenoid pilot - with differential



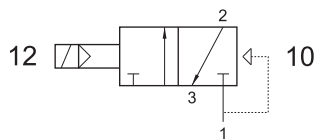
SOLO VERSIONE IN ALLUMINIO
ONLY ALUMINIUM VERSION



321 EFP

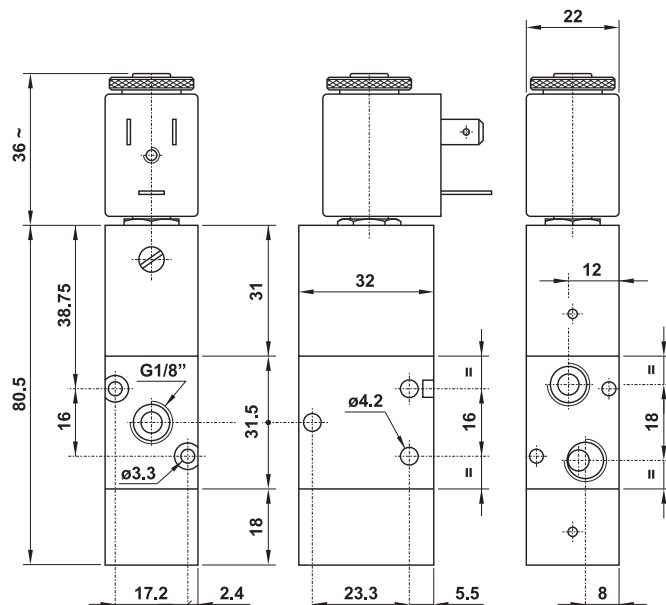
3/2 1/8" NC comando elettrico - ritorno a molla pneumatica

3/2 1/8" NC solenoid pilot - pneumatic spring return



Non può essere utilizzata come valvola normalmente aperta.
It cannot be used as normally open valve.

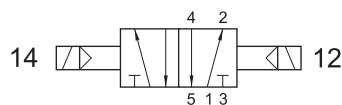
SOLO VERSIONE IN ALLUMINIO
ONLY ALUMINIUM VERSION



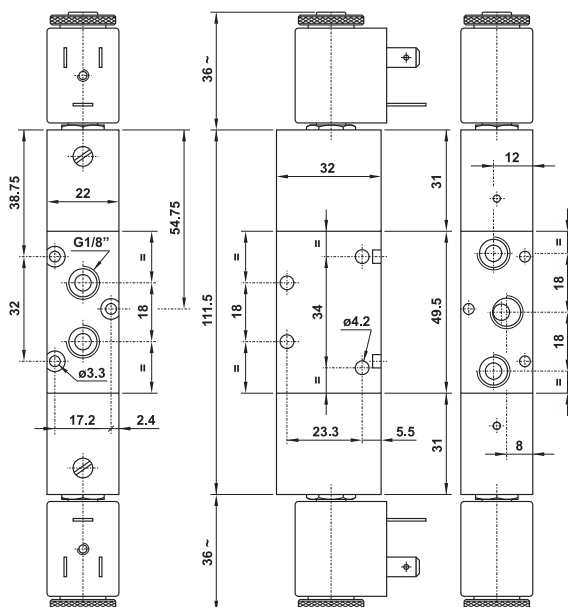
521 EE

5/2 1/8" doppio comando elettrico

5/2 1/8" double solenoid pilot



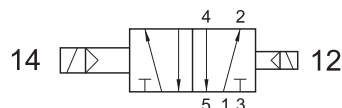
SOLO VERSIONE IN ALLUMINIO
ONLY ALUMINIUM VERSION



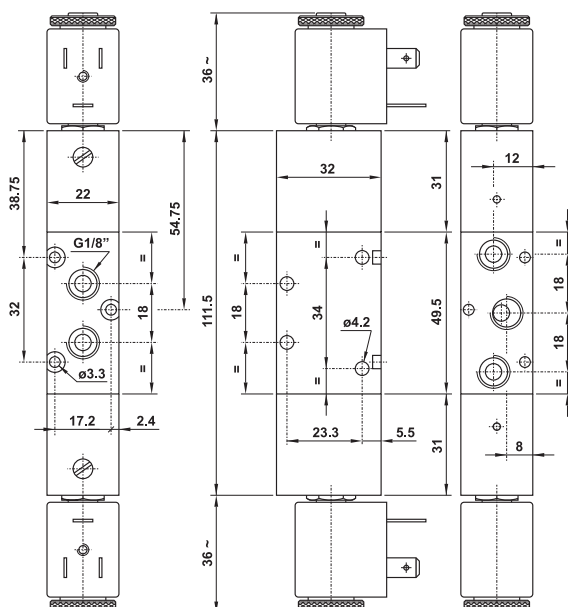
521 EED

5/2 1/8" doppio comando elettrico - con differenziale

5/2 1/8" double solenoid pilot - with differential



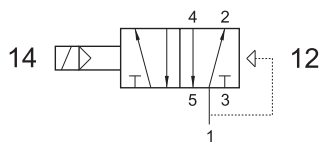
SOLO VERSIONE IN ALLUMINIO
ONLY ALUMINIUM VERSION



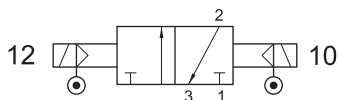
solenoid actuated valves



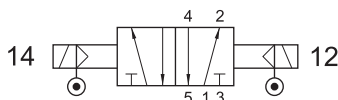
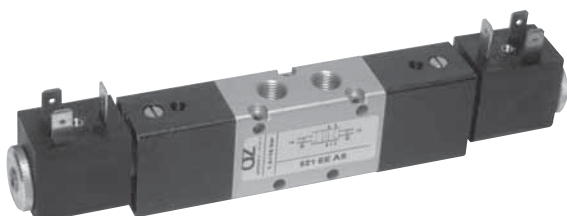
5/2 1/8" solenoid pilot - pneumatic spring return

[illegible]

3/2 1/8" double solenoid pilot with separate air supply

[illegible]

5/2 1/8" double solenoid pilot with separate air supply

[illegible]

valvole ad azionamento elettropneumatico

solenoid actuated valves



5213C EE

centri chiusi
closed centres

5213A EE

centri aperti
open centres

5213P EE

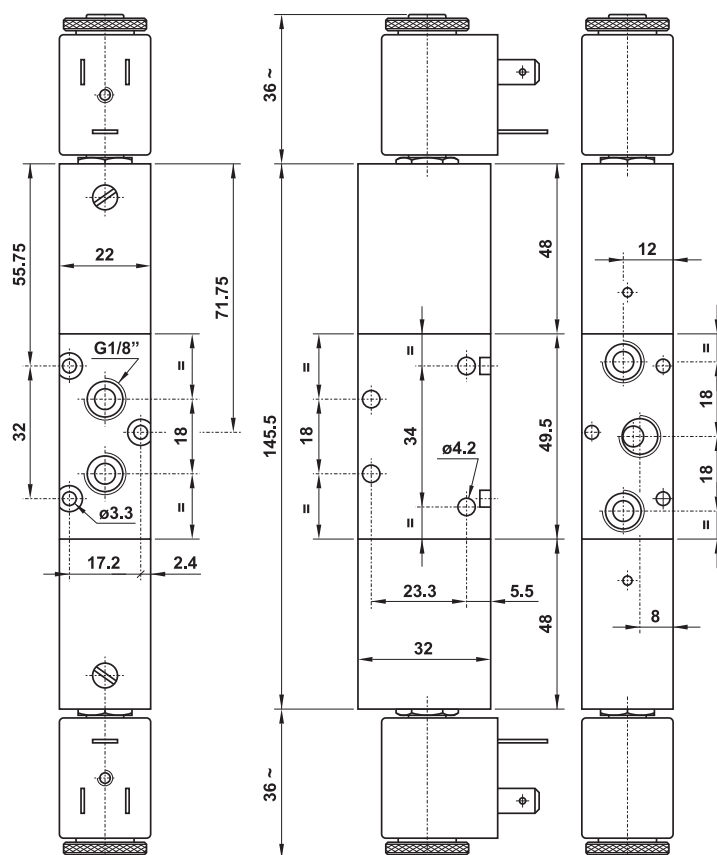
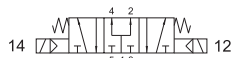
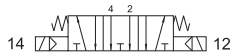
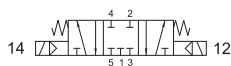
centri in pressione
pressurized centres

5/3 1/8" doppio comando elettrico

5/3 1/8" double solenoid pilot

SOLO VERSIONE IN ALLUMINIO

ONLY ALUMINIUM VERSION



5213C EE AS

centri chiusi
closed centres

5213A EE AS

centri aperti
open centres

5213P EE AS

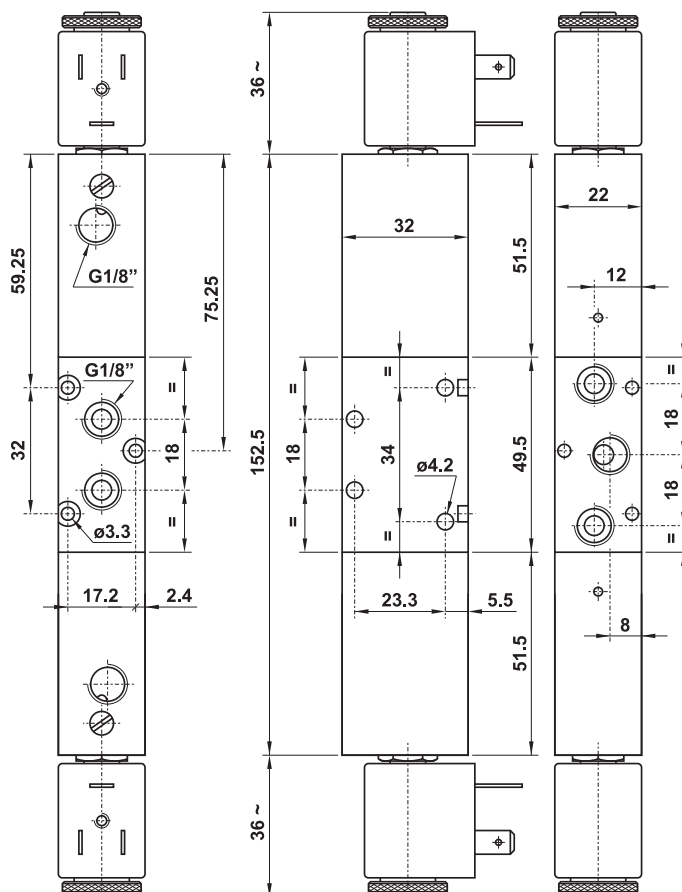
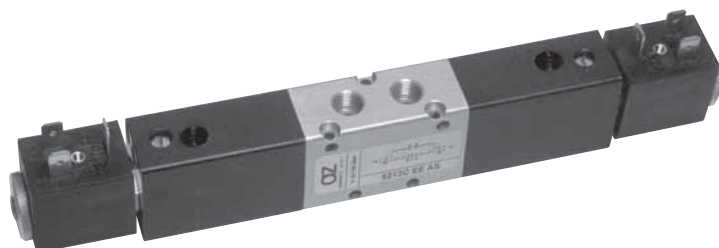
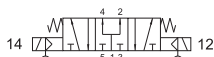
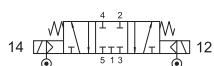
centri in pressione
pressurized centres

5/3 1/8" doppio comando elettrico alimentazione separata

5/3 1/8" double solenoid pilot with separate air supply

SOLO VERSIONE IN ALLUMINIO

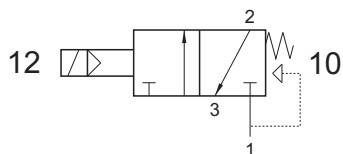
ONLY ALUMINIUM VERSION



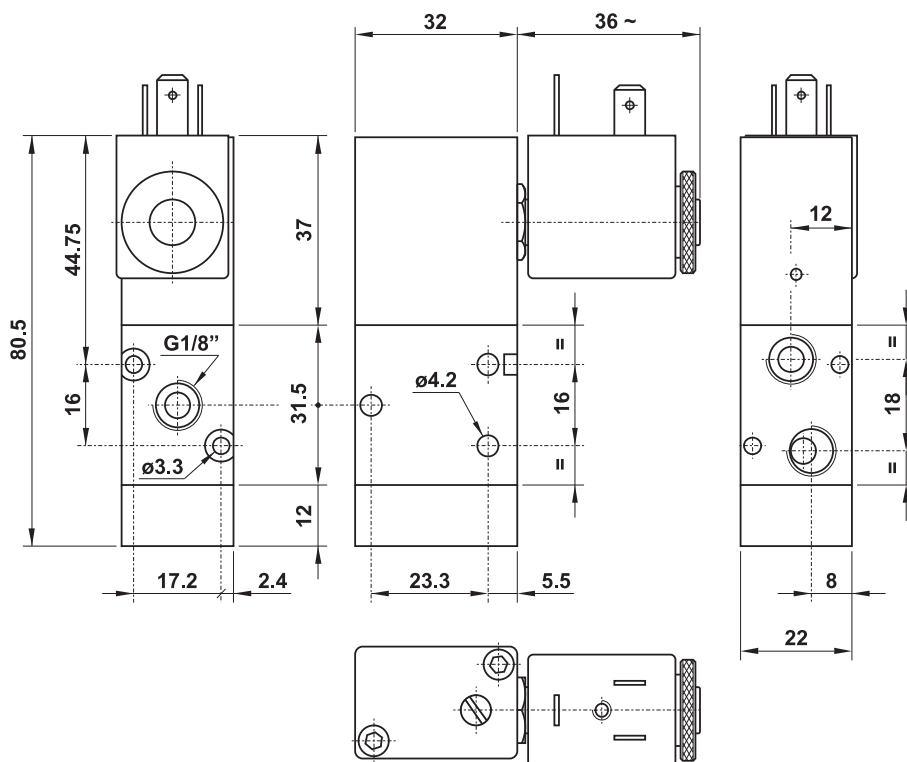
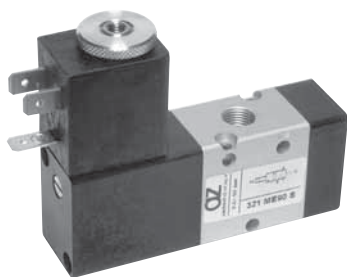
321 ME90 S

3/2 1/8" NC comando elettrico 90° sul lato stretto - ritorno a molla

3/2 1/8" NC 90° solenoid pilot on the narrow side for compact assembly - spring return



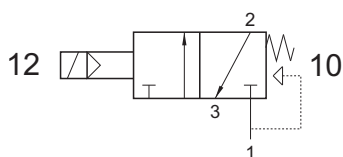
Non può essere utilizzata come valvola normalmente aperta.
It cannot be used as normally open valve.



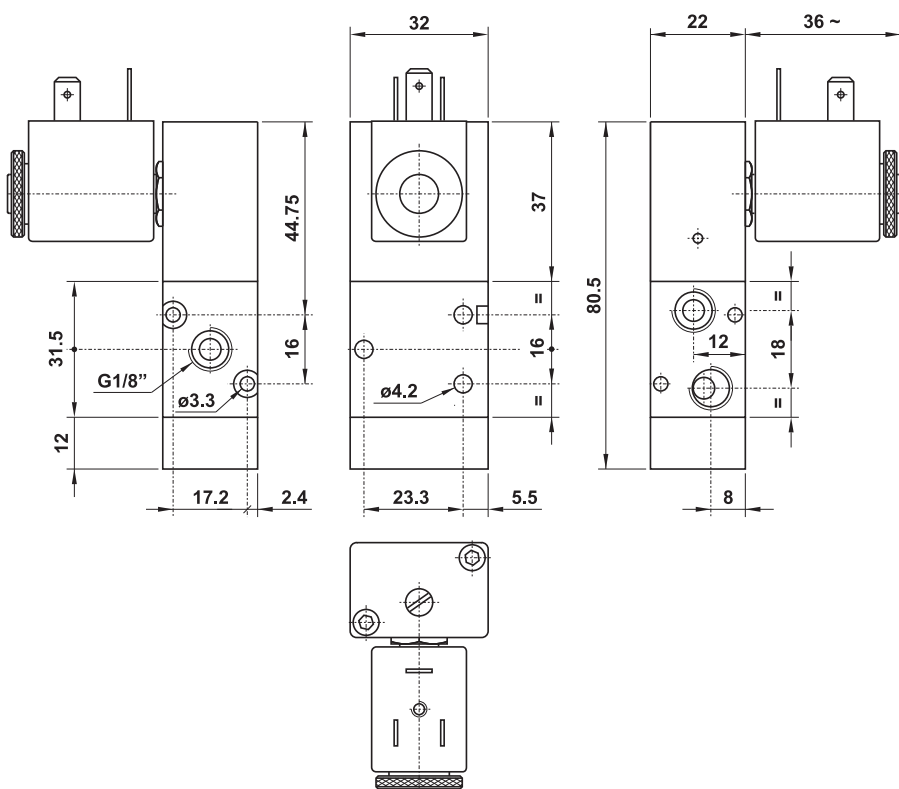
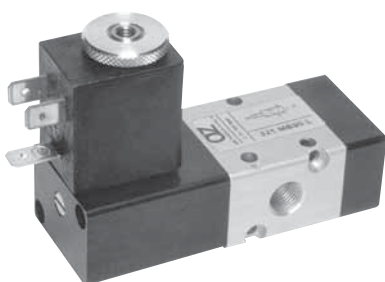
321 ME90 L

3/2 1/8" NC comando elettrico 90° sul lato largo - ritorno a molla

3/2 1/8" NC 90° solenoid pilot on the wide side - spring return



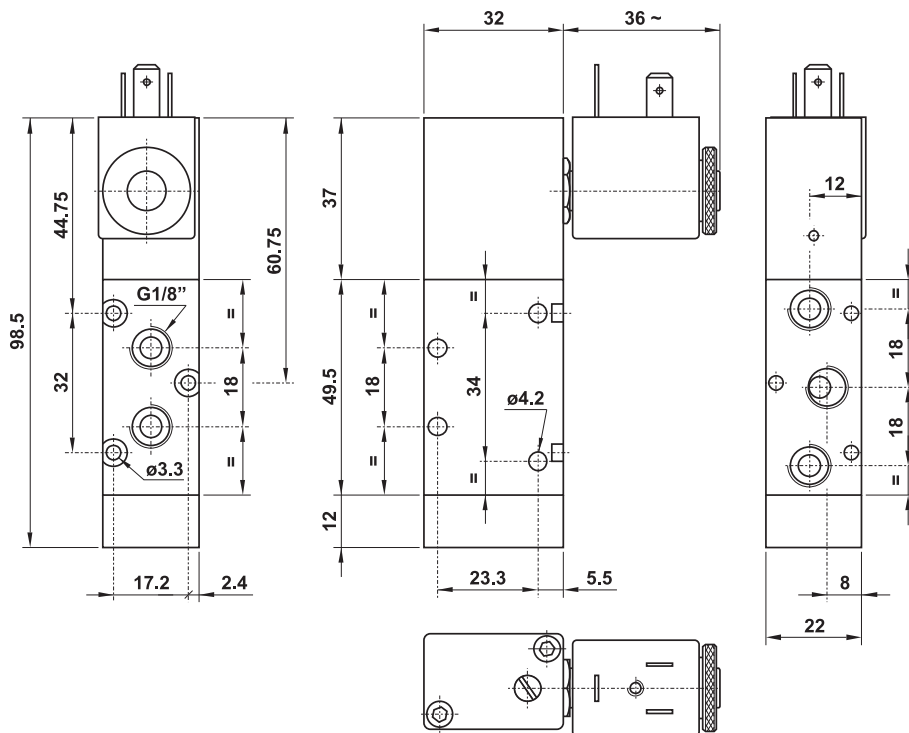
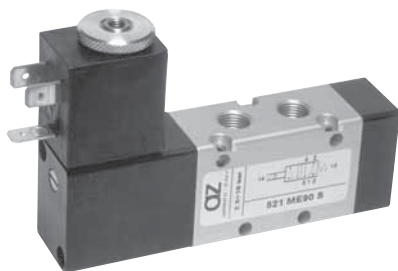
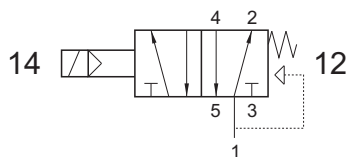
Non può essere utilizzata come valvola normalmente aperta.
It cannot be used as normally open valve.



521 ME90 S

5/2 1/8" comando elettrico 90° sul lato stretto - ritorno a molla

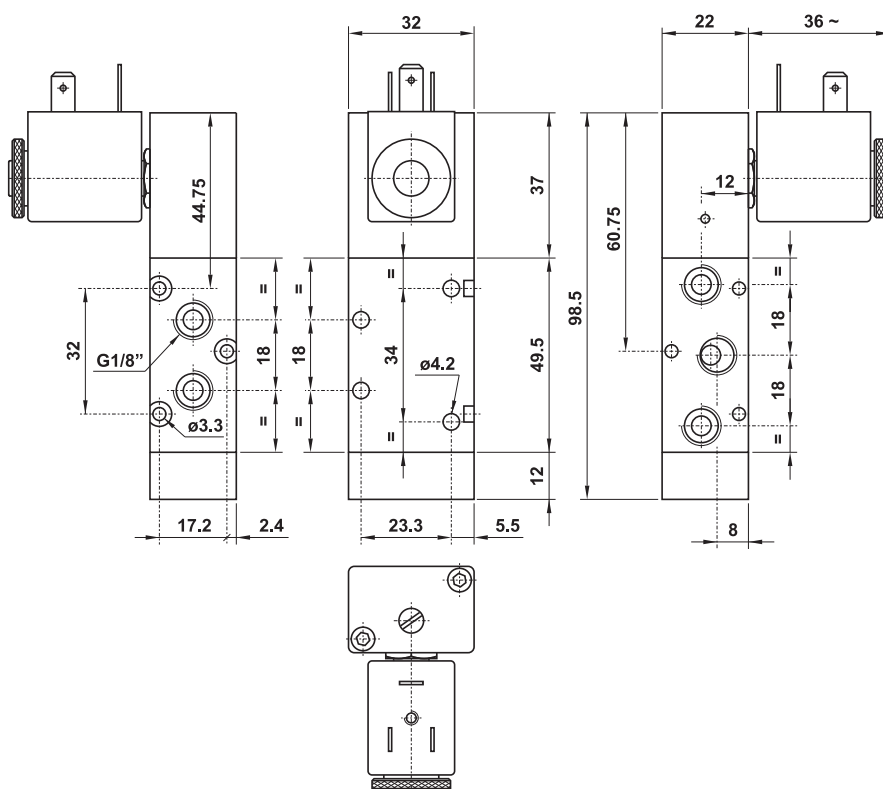
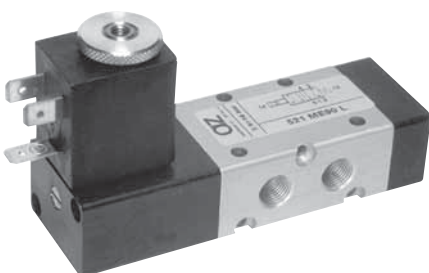
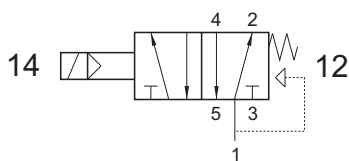
5/2 1/8" 90° solenoid pilot on the narrow side for compact assembly - spring return



521 ME90 L

5/2 1/8" comando elettrico 90° sul lato largo - ritorno a molla

5/2 1/8" 90° solenoid pilot on the wide side - spring return

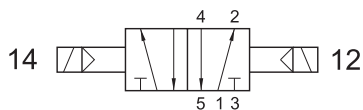


solenoid actuated valves

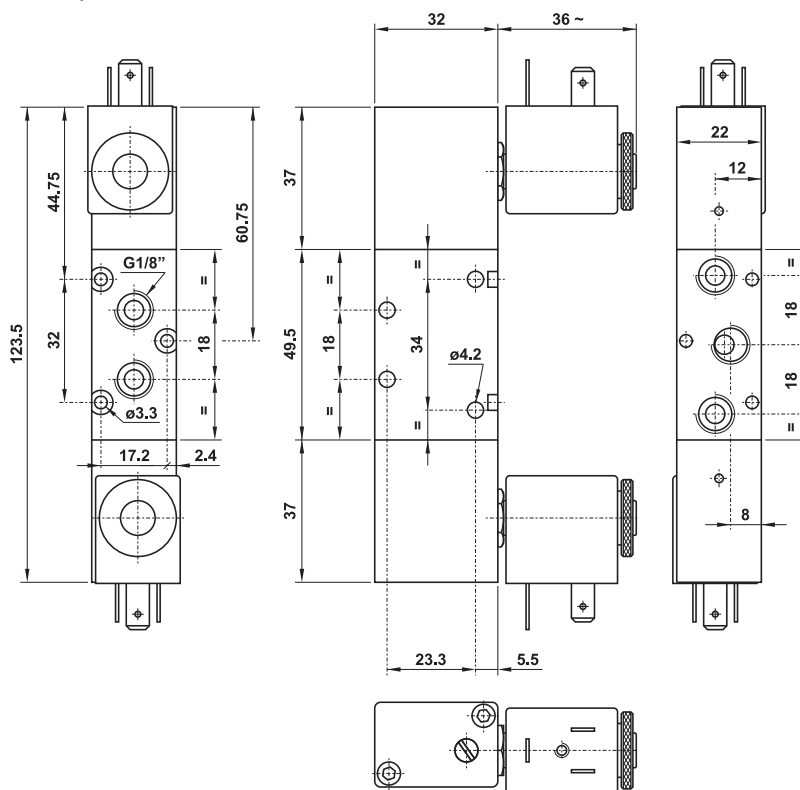
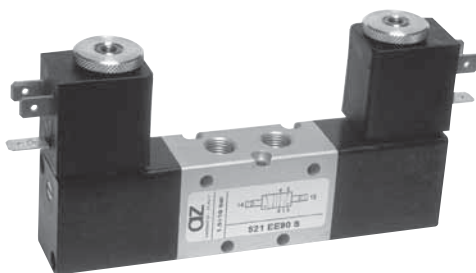
521 EE90 S

5/2 1/8" doppio comando elettrico 90° sul lato stretto

5/2 1/8" 90° double solenoid pilot on the narrow side for compact assembly



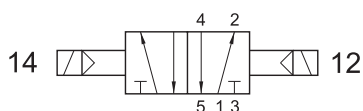
SOLO VERSIONE IN ALLUMINIO
ONLY ALUMINIUM VERSION



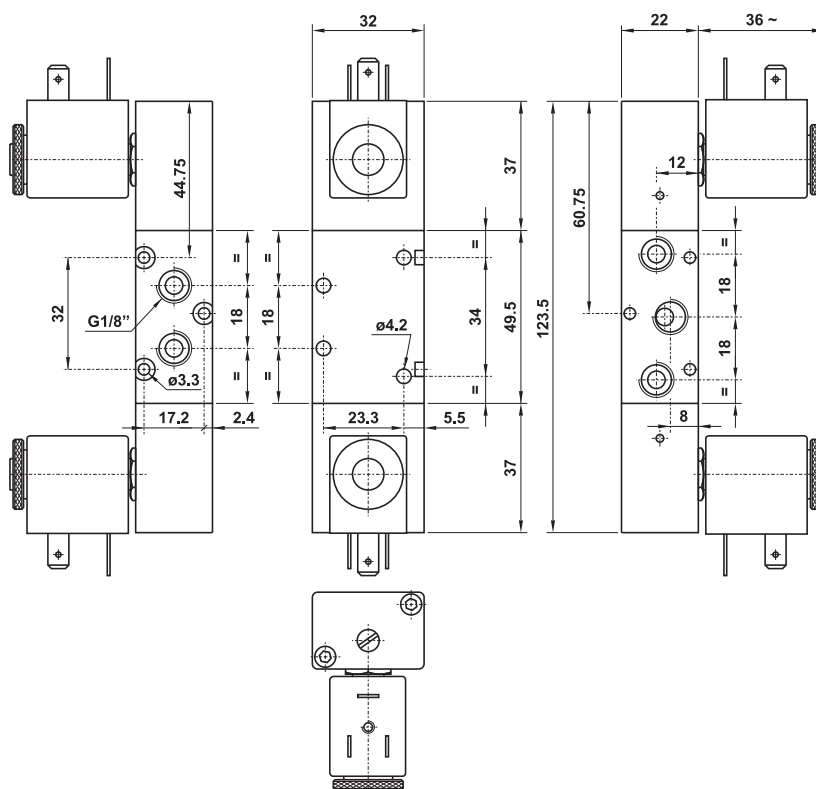
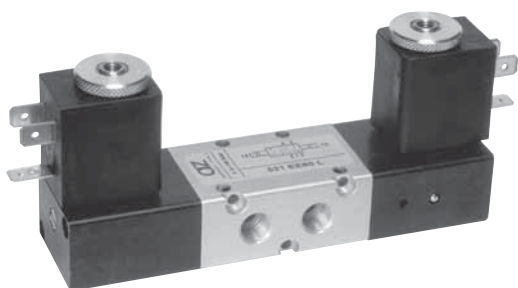
521 EE90 L

5/2 1/8" doppio comando elettrico 90° sul lato largo

5/2 1/8" 90° double solenoid pilot on the wide side



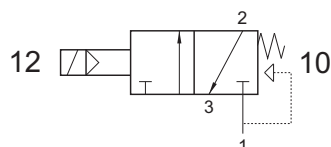
SOLO VERSIONE IN ALLUMINIO
ONLY ALUMINIUM VERSION



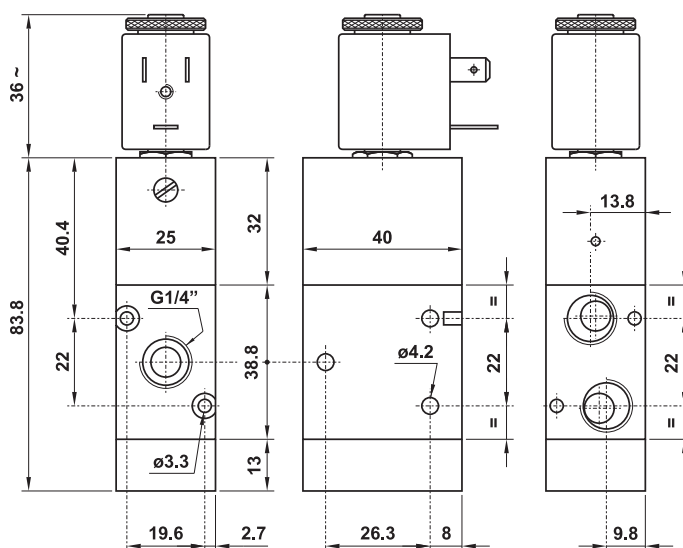
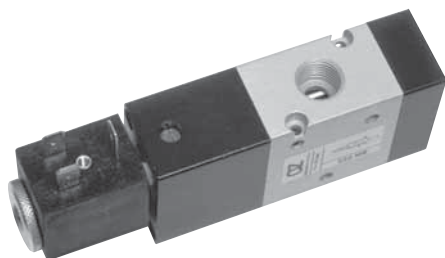
322 ME

3/2 1/4" NC comando elettrico - ritorno a molla

3/2 1/4" NC solenoid pilot - spring return



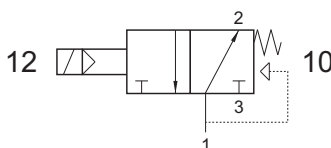
Non può essere utilizzata come valvola normalmente aperta.
It cannot be used as normally open valve.



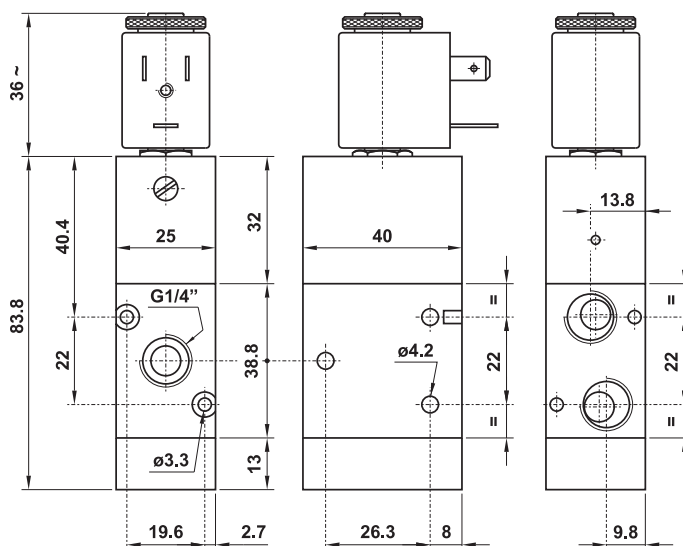
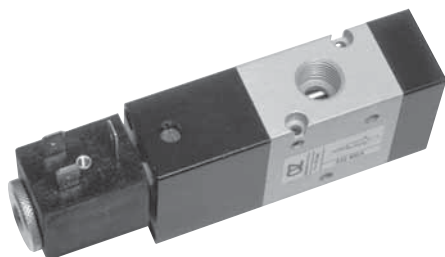
322 MEA

3/2 1/4" NA comando elettrico - ritorno a molla

3/2 1/4" NO solenoid pilot - spring return



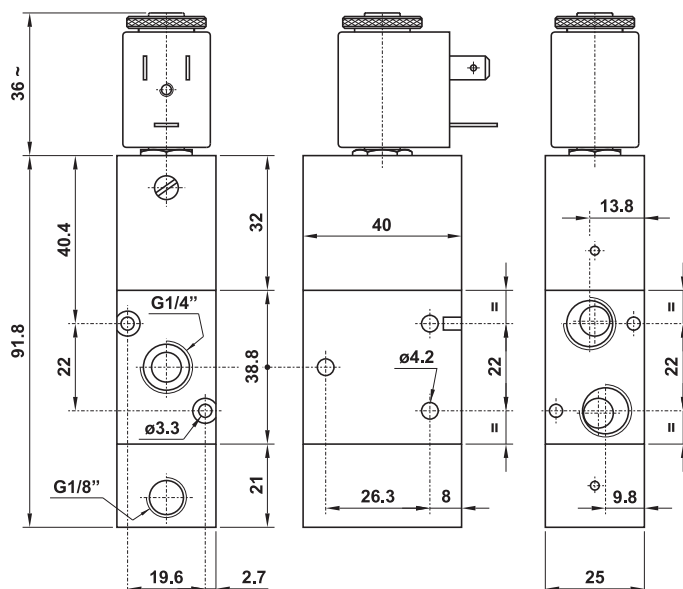
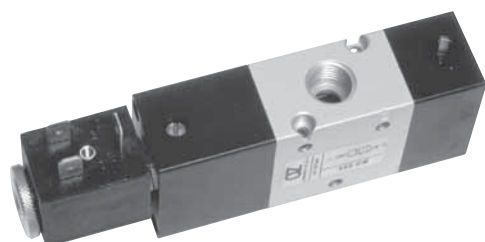
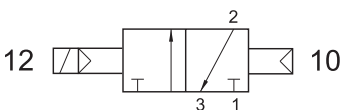
Non può essere utilizzata come valvola normalmente chiusa.
It cannot be used as normally closed valve.



322 CE

3/2 1/4" comando elettrico - ritorno a comando pneumatico

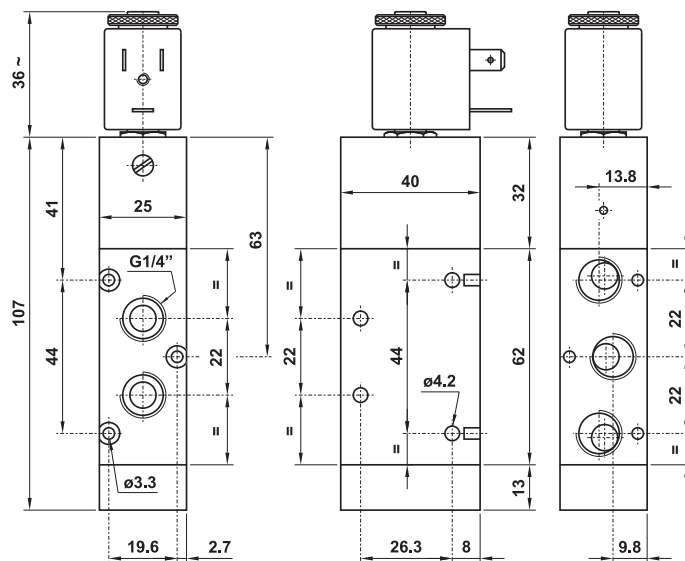
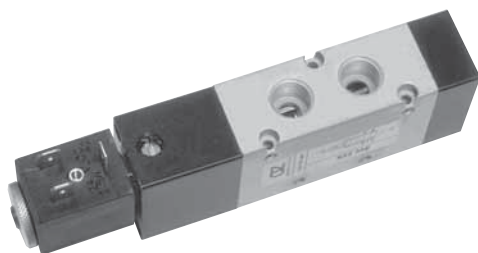
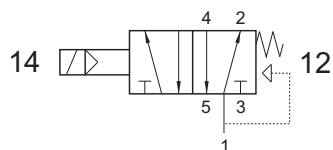
3/2 1/4" solenoid pilot - separate pneumatically piloted return



522 ME

5/2 1/4" comando elettrico - ritorno a molla

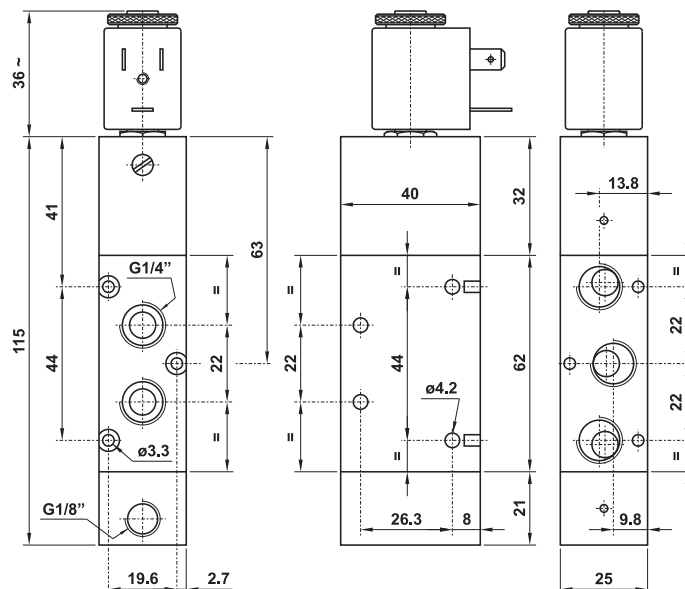
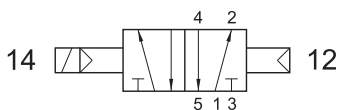
5/2 1/4" solenoid pilot - spring return



522 CE

5/2 1/4" comando elettrico - ritorno a comando pneumatico

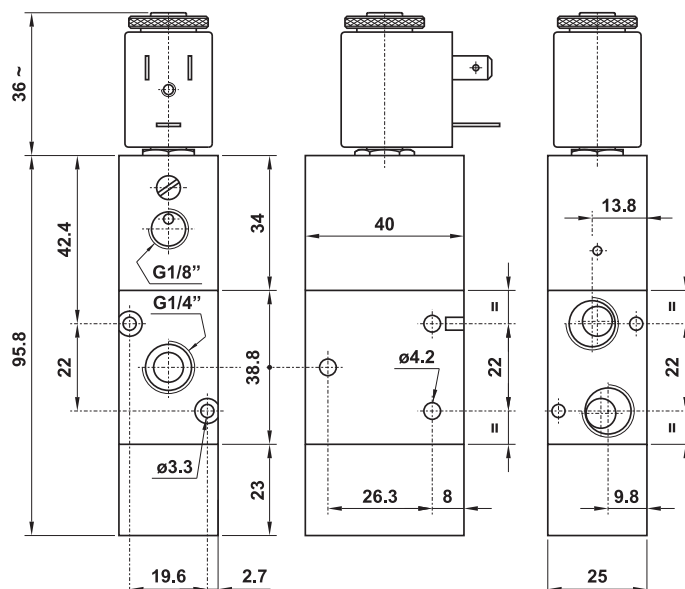
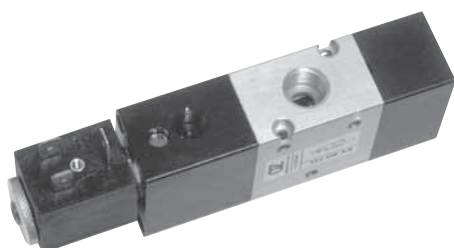
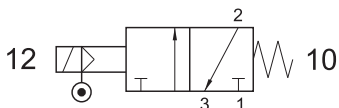
5/2 1/4" solenoid pilot - separate pneumatically piloted return



322 ME AS

3/2 1/4" comando elettrico alimentazione separata - ritorno a molla

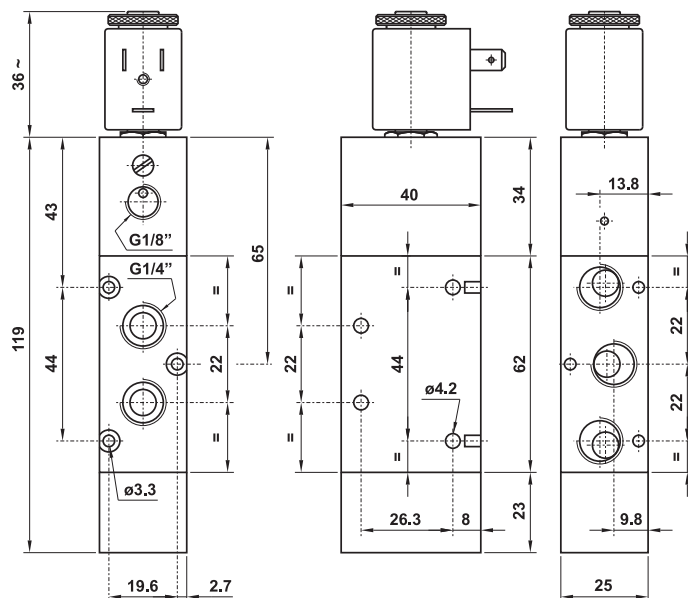
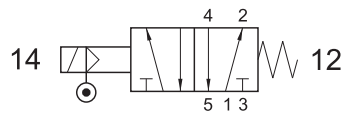
3/2 1/4" solenoid pilot with separate air supply - spring return



522 ME AS

5/2 1/4" comando elettrico alimentazione separata - ritorno a molla

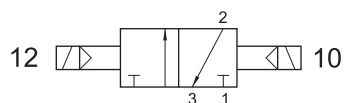
5/2 1/4" solenoid pilot with separate air supply - spring return



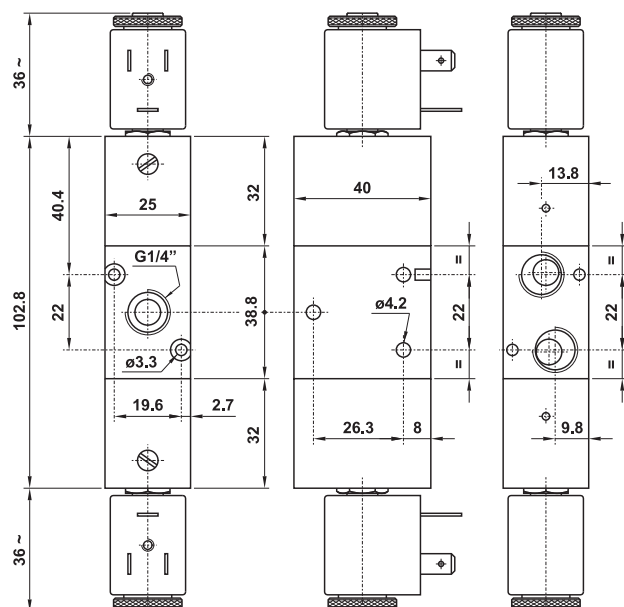
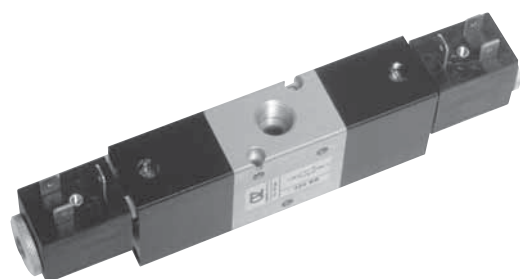
322 EE

3/2 1/4" doppio comando elettrico

3/2 1/4" double solenoid pilot



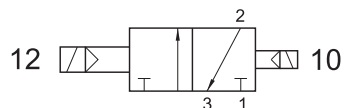
SOLO VERSIONE IN ALLUMINIO
ONLY ALUMINIUM VERSION



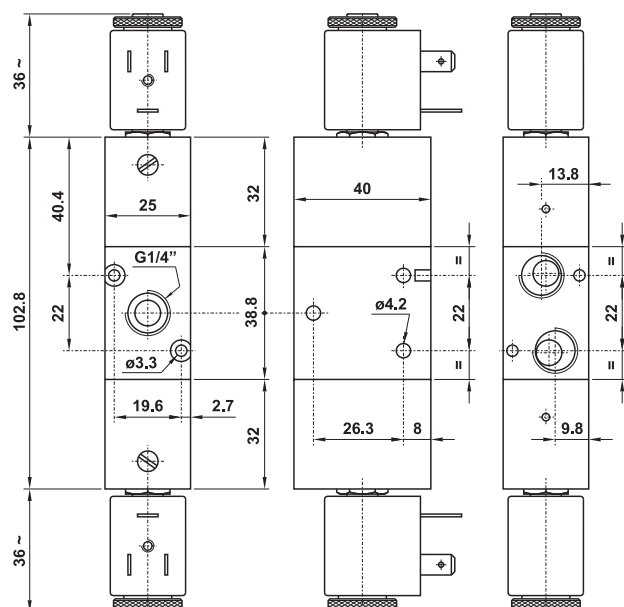
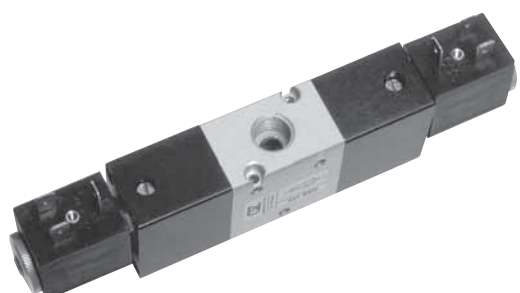
322 EED

3/2 1/4" doppio comando elettrico - con differenziale

3/2 1/4" double solenoid pilot - with differential



SOLO VERSIONE IN ALLUMINIO
ONLY ALUMINIUM VERSION



valvole ad azionamento elettropneumatico

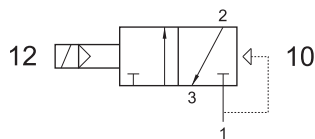
solenoid actuated valves



322 EFP

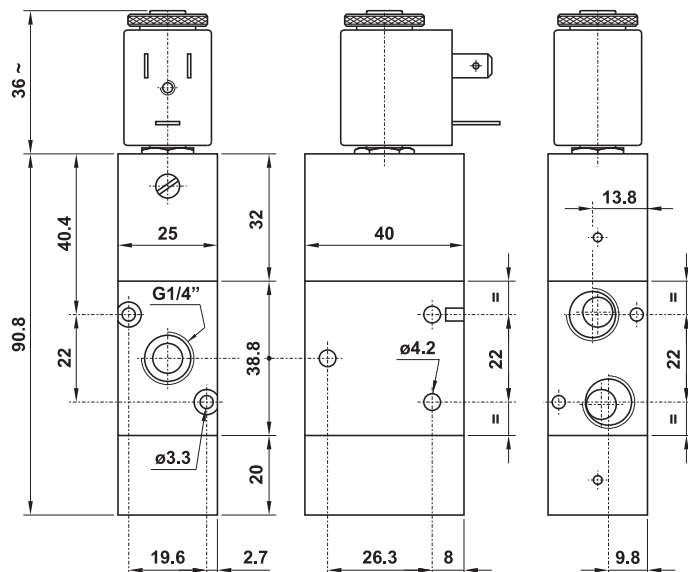
3/2 1/4" NC comando elettrico - ritorno a molla pneumatica

3/2 1/4" NC solenoid pilot - pneumatic spring return



Non può essere utilizzata come valvola normalmente aperta.
It cannot be used as normally open valve.

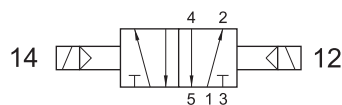
SOLO VERSIONE IN ALLUMINIO
ONLY ALUMINIUM VERSION



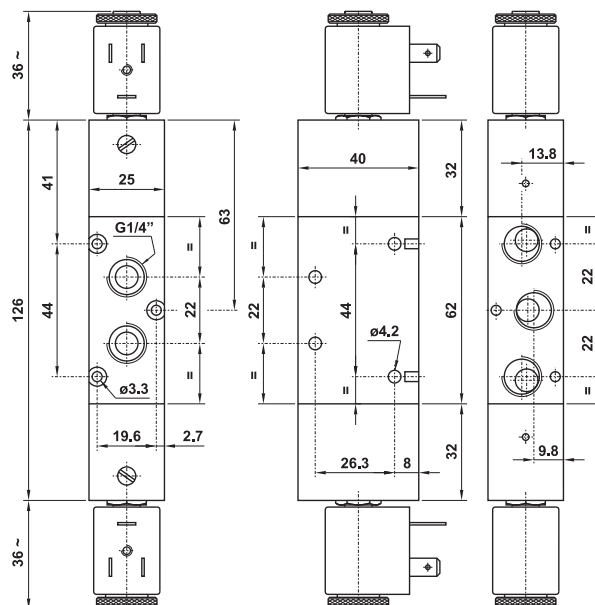
522 EE

5/2 1/4" doppio comando elettrico

5/2 1/4" double solenoid pilot



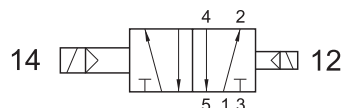
SOLO VERSIONE IN ALLUMINIO
ONLY ALUMINIUM VERSION



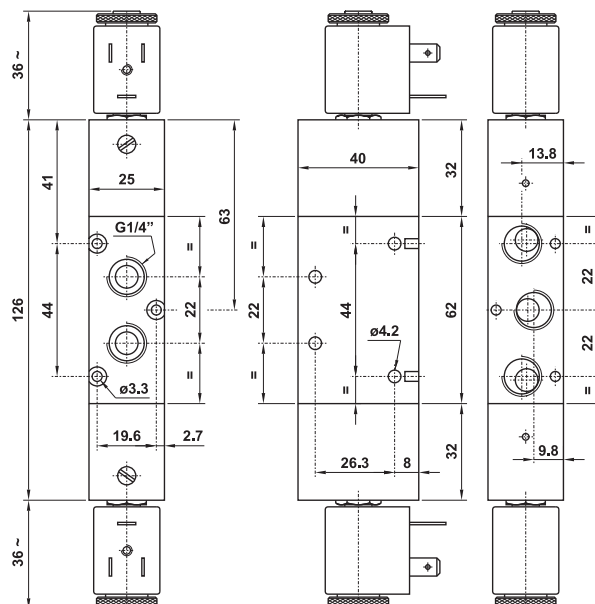
522 EED

5/2 1/4" doppio comando elettrico - con differenziale

5/2 1/4" double solenoid pilot - with differential



SOLO VERSIONE IN ALLUMINIO
ONLY ALUMINIUM VERSION



valvole ad azionamento elettropneumatico

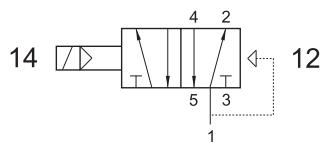
solenoid actuated valves



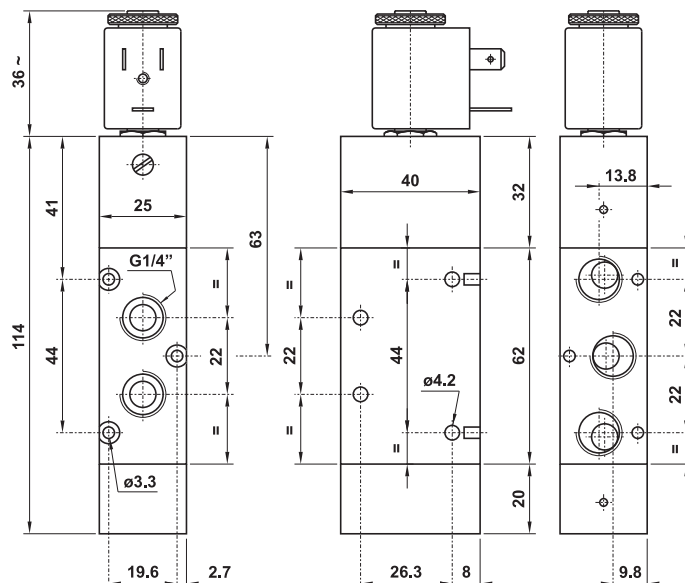
522 EFP

5/2 1/4" comando elettrico - ritorno a molla pneumatica

5/2 1/4" solenoid pilot - pneumatic spring return



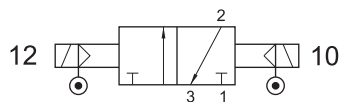
SOLO VERSIONE IN ALLUMINIO
ONLY ALUMINIUM VERSION



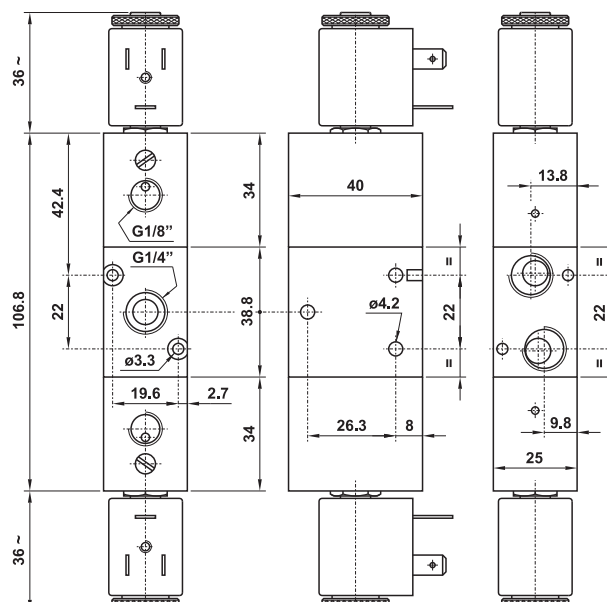
322 EE AS

3/2 1/4" doppio comando elettrico alimentazione separata

3/2 1/4" double solenoid pilot with separate air supply



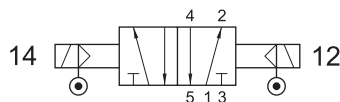
SOLO VERSIONE IN ALLUMINIO
ONLY ALUMINIUM VERSION



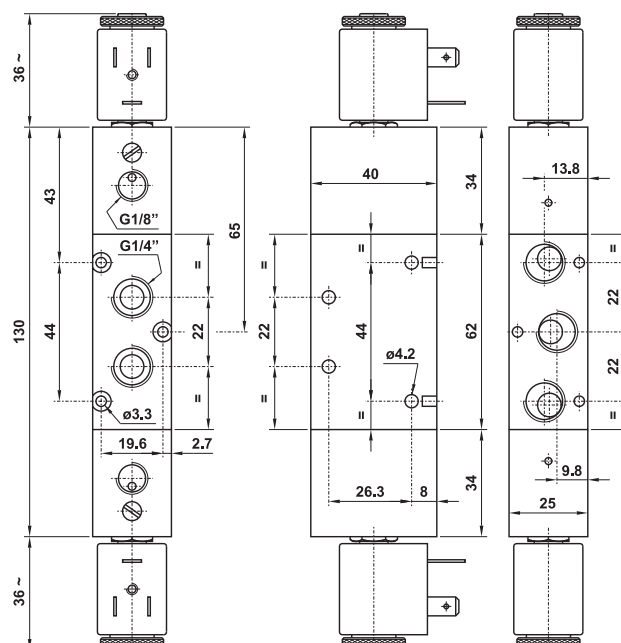
522 EE AS

5/2 1/4" doppio comando elettrico alimentazione separata

5/2 1/4" double solenoid pilot with separate air supply



SOLO VERSIONE IN ALLUMINIO
ONLY ALUMINIUM VERSION



valvole ad azionamento elettropneumatico

solenoid actuated valves



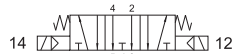
5223C EE

centri chiusi
closed centres



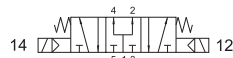
5223A EE

centri aperti
open centres



5223P EE

centri in pressione
pressurized centres

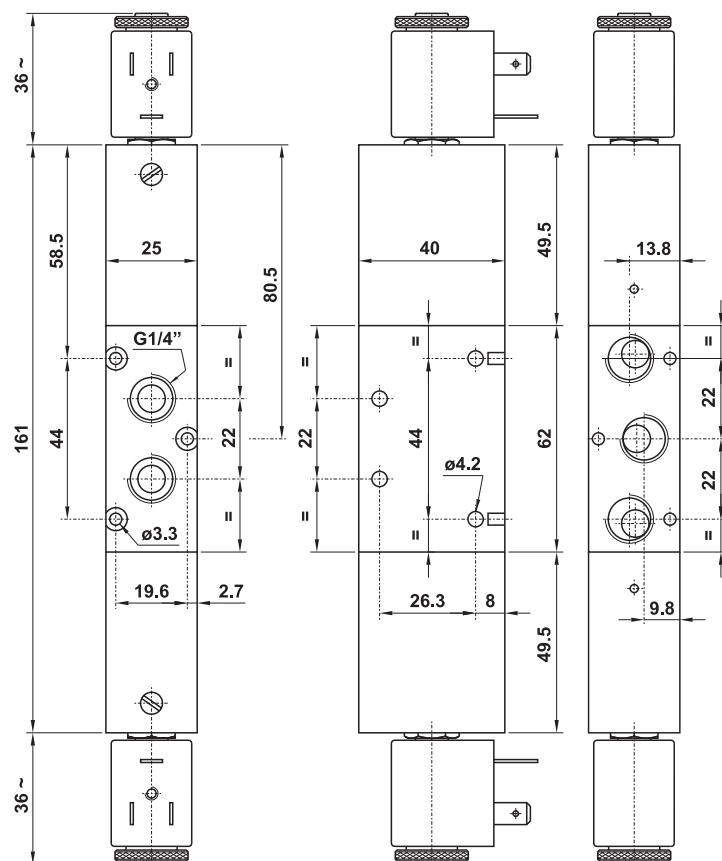


5/3 1/4" doppio comando elettrico

5/3 1/4" double solenoid pilot

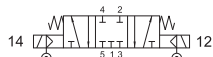
SOLO VERSIONE IN ALLUMINIO

ONLY ALUMINIUM VERSION



5223C EE AS

centri chiusi
closed centres



5223A EE AS

centri aperti
open centres



5223P EE AS

centri in pressione
pressurized centres

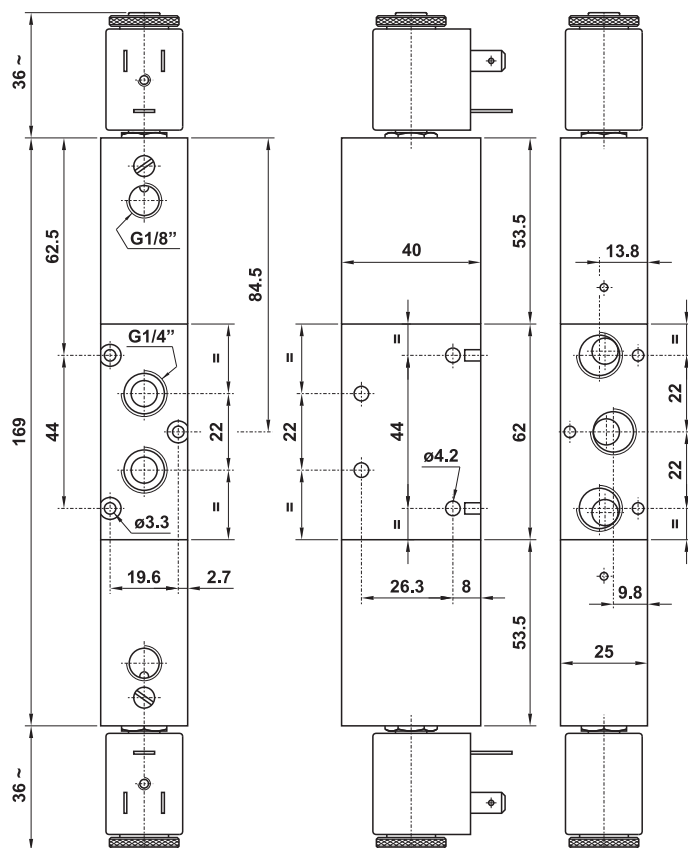


5/3 1/4" doppio comando elettrico alimentazione separata

5/3 1/4" double solenoid pilot with separate air supply

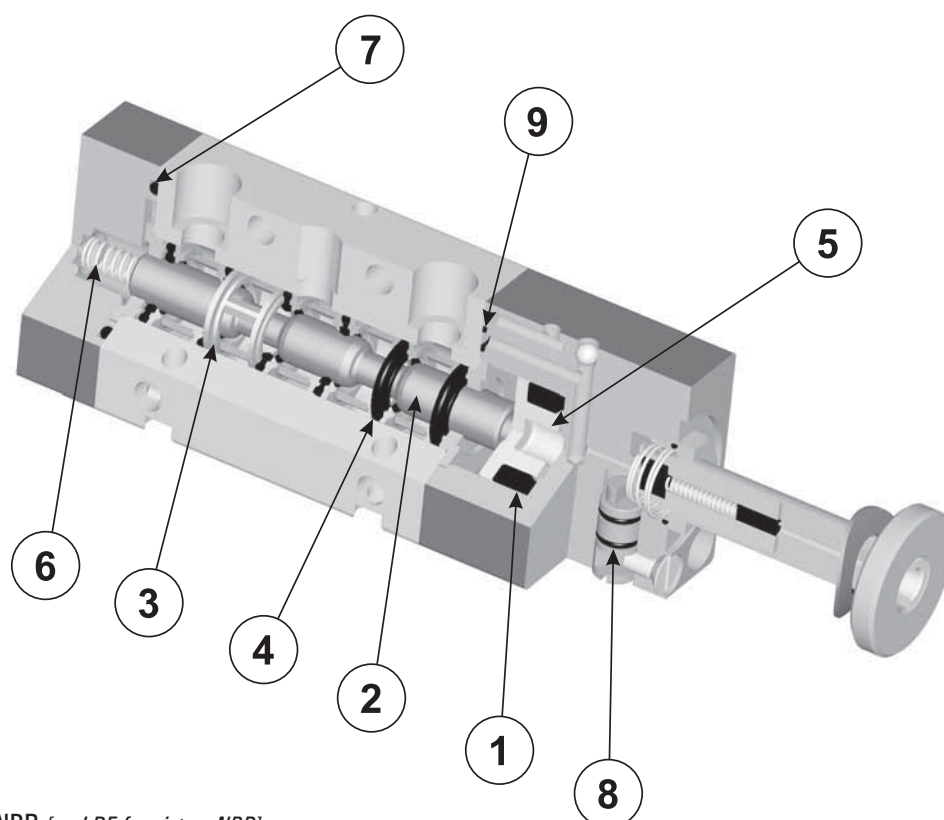
SOLO VERSIONE IN ALLUMINIO

ONLY ALUMINIUM VERSION



ricambi per valvole a spola

spare parts for spool valves



1. Guarnizione DE per pistone: NBR [seal DE for piston: NBR]
2. Spola: alluminio 11S nichelato [spool: aluminium 11S, nicked]
3. Distanziale cassetto: ottone [brass]
4. Guarnizione cassetto: NBR [seal for spool: NBR]
5. Pistone per comando spola: delrin [piston to actuate the spool: delrin]
6. Molla: acciaio [spring: steel]
7. Guarnizione O-Ring: NBR
8. Guarnizione O-Ring 4x1: NBR
9. Guarnizione O-Ring sagomato: NBR [shaped O-Ring: NBR]

codice kit code of kit	utilizzabile per suitable for		
00.036.2	321 MC	321 MCA	321 ME
	321 MEA	321 ME90 S	321 ME90 L
00.039.2	521 MC	521 ME	521 ME90 S
	521 ME90 L		
00.037.2	321 CC	321 EE	321 CE
	321 EE AS	321 EE90 S	321 EE90 L
00.040.2	521 CC	521 EE	521 CE
	521 EE AS	521 EE90 S	521 EE90 L
01.014.2	322 MC	322 MC SUP	322 MCA
	322 ME	322 MEA	
01.020.2	522 MC	522 MC SUP	522 ME
01.015.2	322 CC	322 CC SUP	322 CE
	322 EE	322 EE AS	
01.021.2	522 CC	522 CC SUP	522 CE
	522 EE	522 EE AS	

codice kit code of kit	utilizzabile per suitable for		
00.038.2	321 EED	321 EFP	321 CCD
	321 CFP		
00.041.2	521 EED	521 EFP	521 CCD
	521 CFP		
01.019.2	322 EED	322 EFP	322 CCD
	322 CFP		
01.022.2	522 EED	522 EFP	522 CCD
	522 CFP		
00.050.2	321 ME AS		
01.035.2	322 ME AS		
00.051.2	521 ME AS		
01.036.2	522 ME AS		
00.108.2	5213C CC	5213A CC	5213P CC
	5213C EE	5213A EE	5213P EE
	5213C EE AS	5213A EE AS	5213P EE AS
01.061.2	5223C CC	5223A CC	5223P CC
	5223C EE	5223A EE	5223P EE
	5223C EE AS	5223A EE AS	5223P EE AS

bobine e connettori 22 mm

22 mm coils and connectors



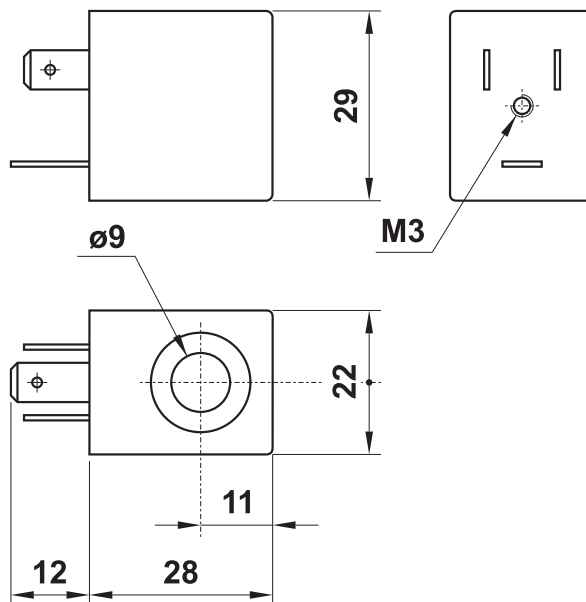
22 mm



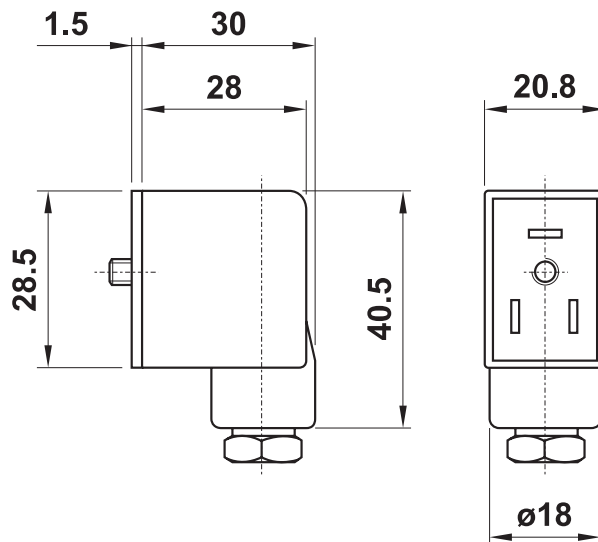
temperatura max di esercizio	+50°C	max working temperature
inserimento	ED 100%	duty cycle
protezione con connettore correttamente montato	IP 65	protection with connector correctly mounted
tolleranza di tensione	±10%	tension tolerance

- a richiesta basso assorbimento 1.5W
low consumption (1.5W) on request

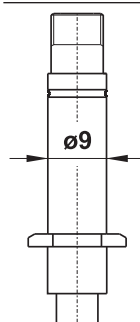
codice code	tensione tension	consumo - power	
		a regime rated	di spunto inrush
00.167.0	12V DC	3W	
00.028.0	24V DC	3W	
00.029.0	24V 50/60Hz	5VA	7.5VA
00.030.0	110V 50/60Hz	5VA	7.5VA
00.031.0	220V 50/60Hz	5VA	7.5VA



codice code	colore colour	cavo cable	tipo type
00.197.0	nero black	PG09	normale standard
00.344.0	trasparente transparent	PG09	con LED 24V with LED 24V
00.345.0	trasparente transparent	PG09	con LED 24V e VDR with LED 24V and VDR
00.346.0	trasparente transparent	PG09	con LED 115V with LED 115V
00.347.0	trasparente transparent	PG09	con LED 115V e VDR with LED 115V and VDR
00.394.0	trasparente transparent	PG09	con LED 230V with LED 230V
00.395.0	trasparente transparent	PG09	con LED 230V e VDR with LED 230V and VDR



PEZZI DI RICAMBIO - spare parts



canotto per elettropilota
armature for solenoid pilot

NC : 00.088.0
NA [NO] : 00.306.0



ghiera in alluminio e rondella
aluminium nut and elastic ring

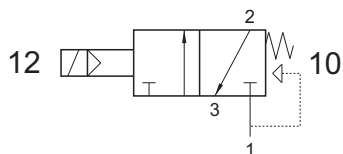
00.125.2

321 ME MIC xx

3/2 1/8" NC comando elettrico con elettropilota 15 mm

3/2 1/8" NC with 15 mm solenoid pilot

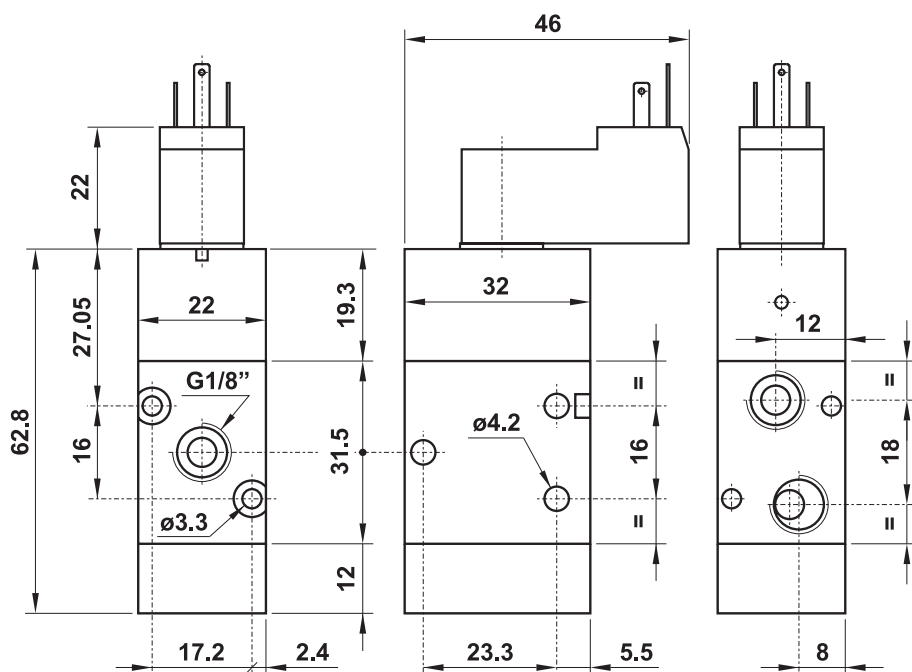
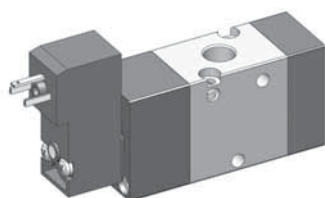
La valvola è venduta con elettropilota/i montato/i (per i dati tecnici vedi pag. 191).
The valve is sold with mounted solenoid pilot(s); for technical data refer to page 191.



Non può essere utilizzata come valvola normalmente aperta.
It cannot be used as normally open valve.

Nella sigla del prodotto sostituire le lettere "xx" con l'indicazione della tensione.
In the part number replace "xx" with the reference of the solenoid tension.

24V DC 01
24V 50/60Hz 02

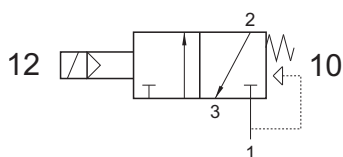


322 ME MIC xx

3/2 1/4" NC comando elettrico con elettropilota 15 mm

3/2 1/4" NC with 15 mm solenoid pilot

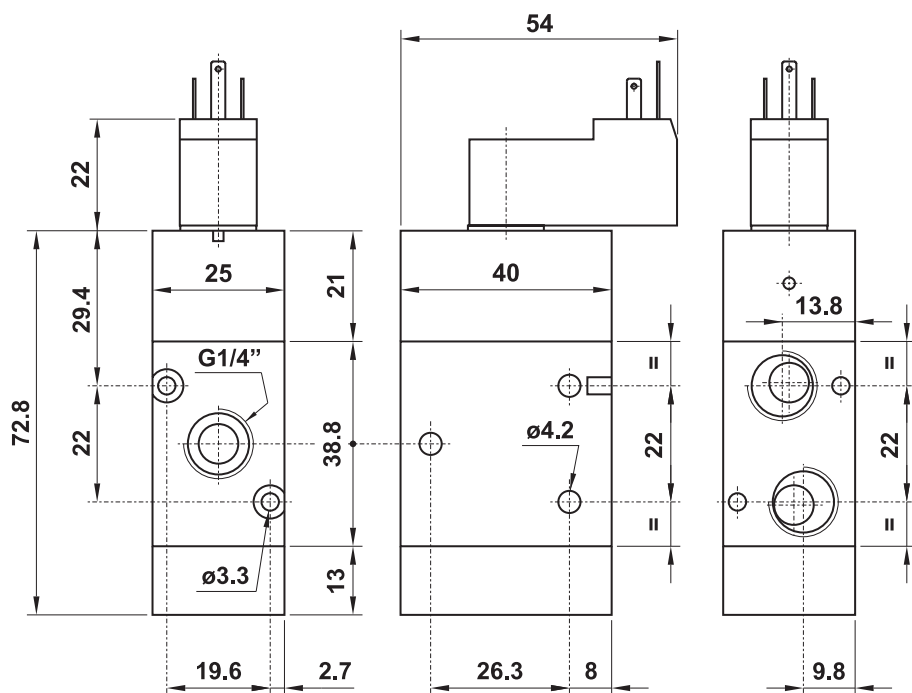
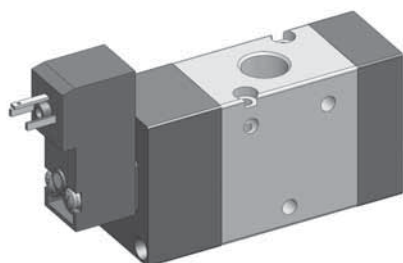
La valvola è venduta con elettropilota/i montato/i (per i dati tecnici vedi pag. 191).
The valve is sold with mounted solenoid pilot(s); for technical data refer to page 191.



Non può essere utilizzata come valvola normalmente aperta.
It cannot be used as normally open valve.

Nella sigla del prodotto sostituire le lettere "xx" con l'indicazione della tensione.
In the part number replace "xx" with the reference of the solenoid tension.

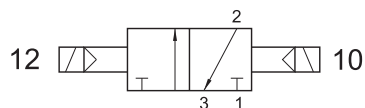
24V DC 01
24V 50/60Hz 02



321 EE MIC xx

3/2 1/8" doppio comando elettrico con elettropilota 15 mm
3/2 1/8" with double 15 mm solenoid pilot

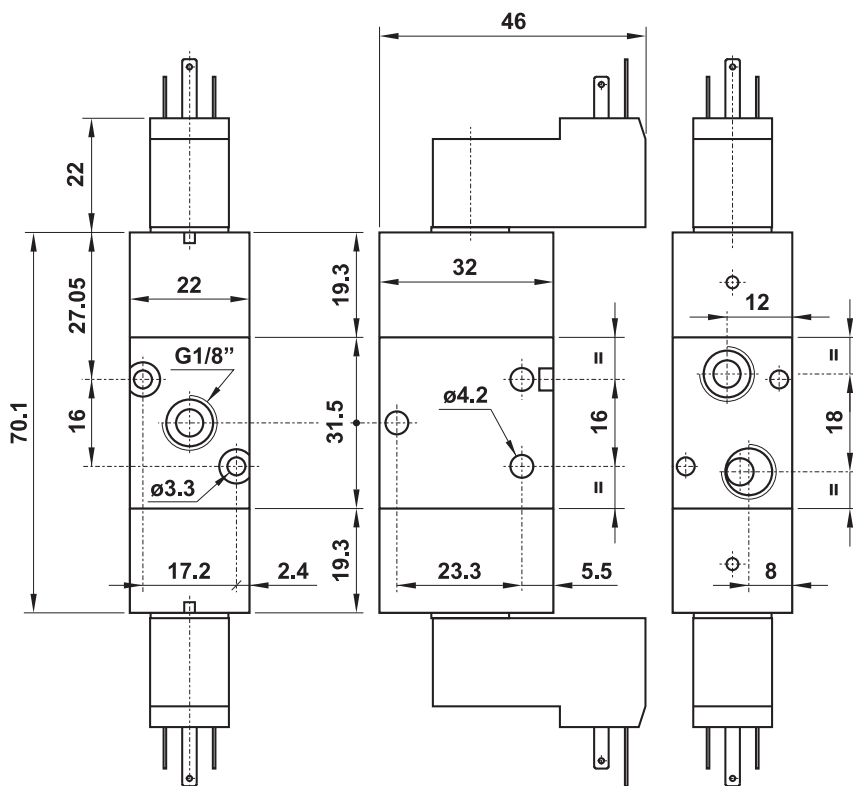
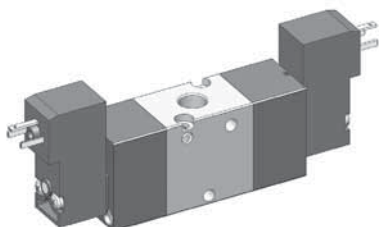
La valvola è venduta con elettropilota/i montato/i (per i dati tecnici vedi pag. 191).
The valve is sold with mounted solenoid pilot(s); for technical data refer to page 191.



SOLO VERSIONE IN ALLUMINIO
ONLY ALUMINIUM VERSION

Nella sigla del prodotto sostituire le lettere "xx" con l'indicazione della tensione.
In the part number replace "xx" with the reference of the solenoid tension.

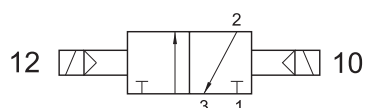
24V DC	01
24V 50/60Hz	02



322 EE MIC xx

3/2 1/4" doppio comando elettrico con elettropilota 15 mm
3/2 1/4" with double 15 mm solenoid pilot

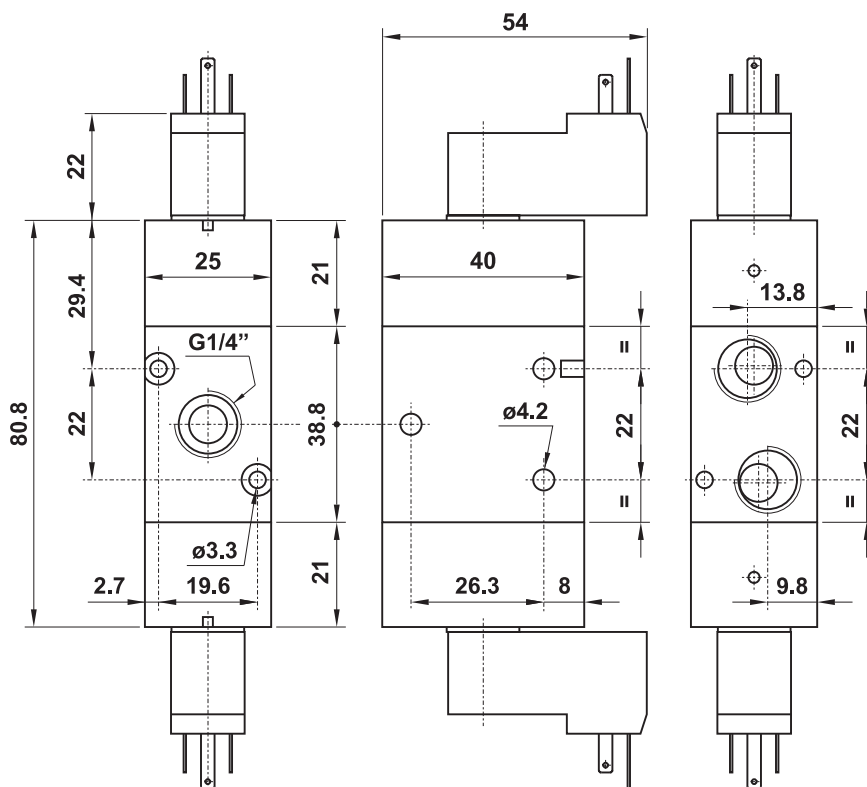
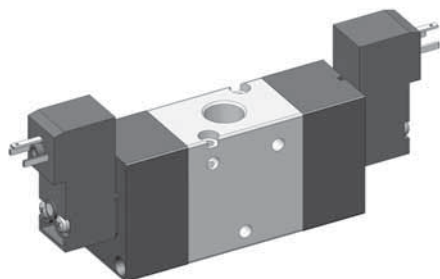
La valvola è venduta con elettropilota/i montato/i (per i dati tecnici vedi pag. 191).
The valve is sold with mounted solenoid pilot(s); for technical data refer to page 191.



SOLO VERSIONE IN ALLUMINIO
ONLY ALUMINIUM VERSION

Nella sigla del prodotto sostituire le lettere "xx" con l'indicazione della tensione.
In the part number replace "xx" with the reference of the solenoid tension.

24V DC	01
24V 50/60Hz	02



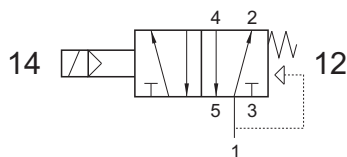
521 ME MIC xx

5/2 1/8" comando elettrico con elettropilota 15 mm

5/2 1/8" with 15 mm solenoid pilot

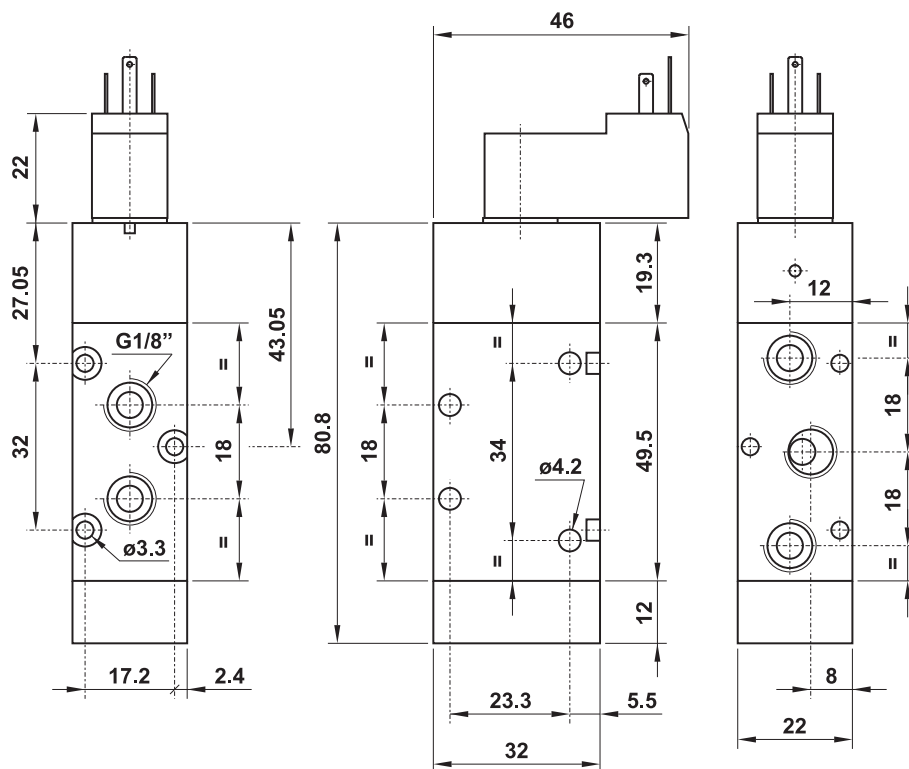
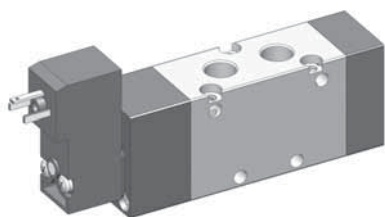
La valvola è venduta con elettropilota/i montato/i (per i dati tecnici vedi pag. 191).

The valve is sold with mounted solenoid pilot(s); for technical data refer to page 191.



Nella sigla del prodotto sostituire le lettere "xx" con l'indicazione della tensione.
In the part number replace "xx" with the reference of the solenoid tension.

24V DC 01
24V 50/60Hz 02



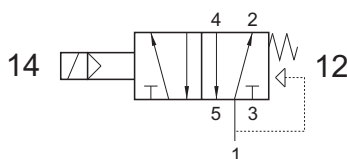
522 ME MIC xx

5/2 1/4" comando elettrico con elettropilota 15 mm

5/2 1/4" with 15 mm solenoid pilot

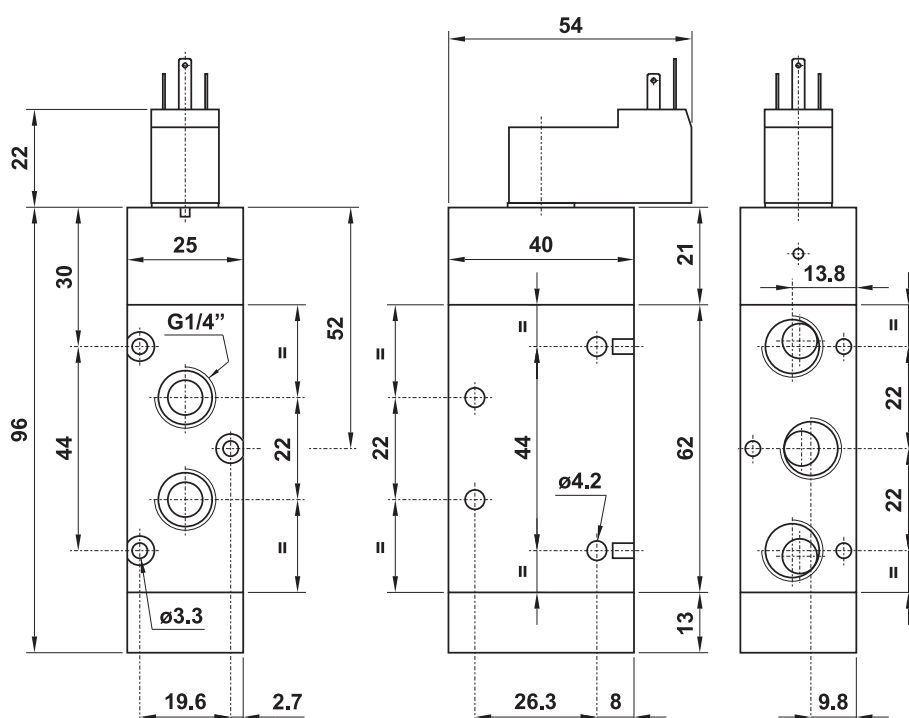
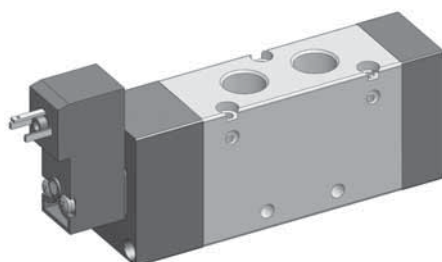
La valvola è venduta con elettropilota/i montato/i (per i dati tecnici vedi pag. 191).

The valve is sold with mounted solenoid pilot(s); for technical data refer to page 191.



Nella sigla del prodotto sostituire le lettere "xx" con l'indicazione della tensione.
In the part number replace "xx" with the reference of the solenoid tension.

24V DC 01
24V 50/60Hz 02

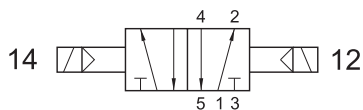


solenoid actuated valves

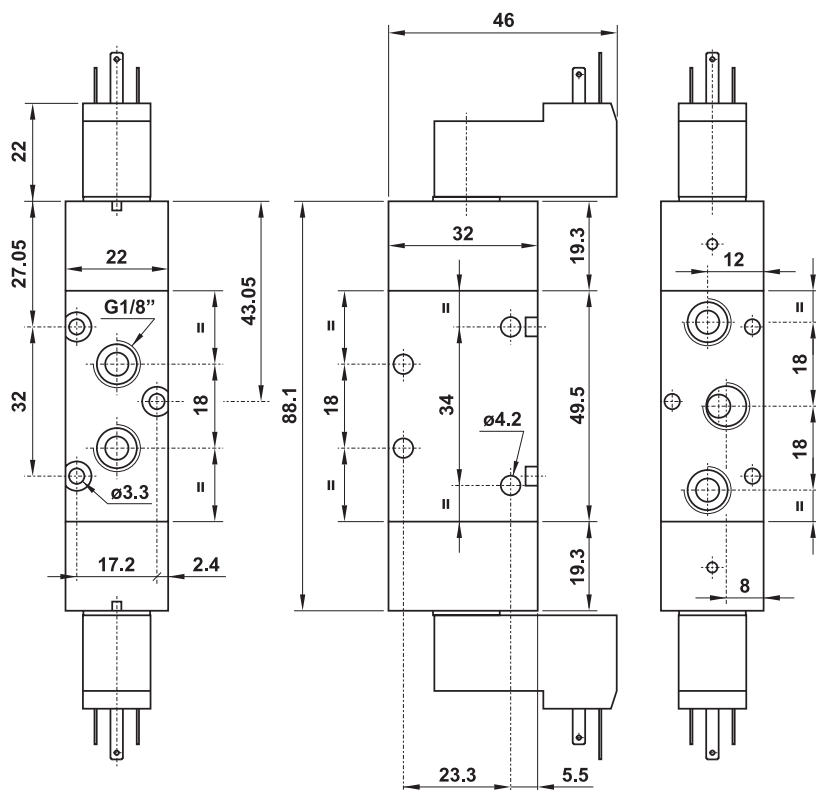


5/2 1/8" doppio comando elettrico con elettropilota 15 mm
5/2 1/8" with double 15 mm solenoid pilot

La valvola è venduta con elettropilotaggi montati (per i dati tecnici vedi pag. 191).
The valve is sold with mounted solenoid pilot(s); for technical data refer to page 191.

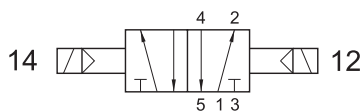


Nella sigla del prodotto sostituire le lettere "xx" con l'indicazione della tensione.
In the part number replace "xx" with the reference of the solenoid tension.



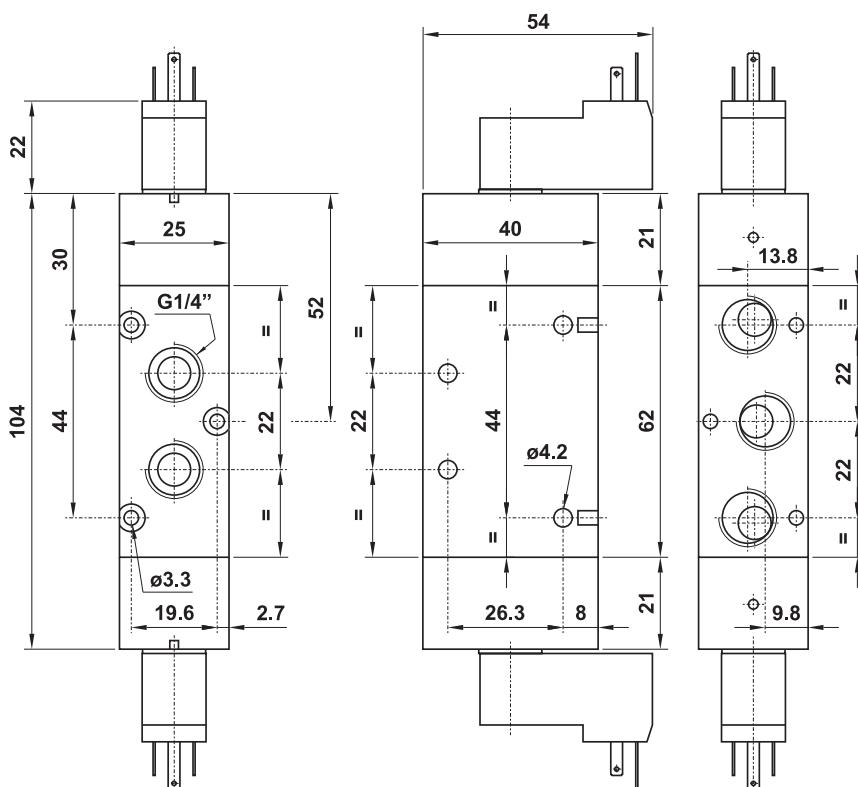
5/2 1/4" doppio comando elettrico con elettropilota 15 mm
5/2 1/4" with double 15 mm solenoid pilot

La valvola è venduta con elettropilota/i montato/i (per i dati tecnici vedi pag. 191).
The valve is sold with mounted solenoid pilot(s); for technical data refer to page 191.



Nella sigla del prodotto sostituire le lettere **"xx"** con l'indicazione della tensione.
In the part number replace "xx" with the reference of the solenoid tension.

A 3D perspective view of a 4/3-way solenoid valve with a manual override. The valve body is rectangular with two circular ports on the top face. It features two solenoid coils, one on each end, and a manual override lever on the right side. The model is shown in a dark gray color.

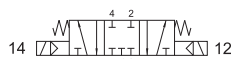


valvole ad azionamento elettropneumatico

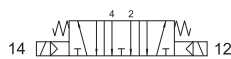
solenoid actuated valves



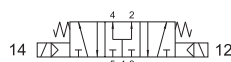
5213C EE MIC xx centri chiusi
closed centres



5213A EE MIC xx centri aperti
open centres



5213P EE MIC xx centri in pressione
pressurized centres



5/3 1/8" doppio comando elettrico con elettropilota 15 mm

5/3 1/8" with double 15 mm solenoid pilot

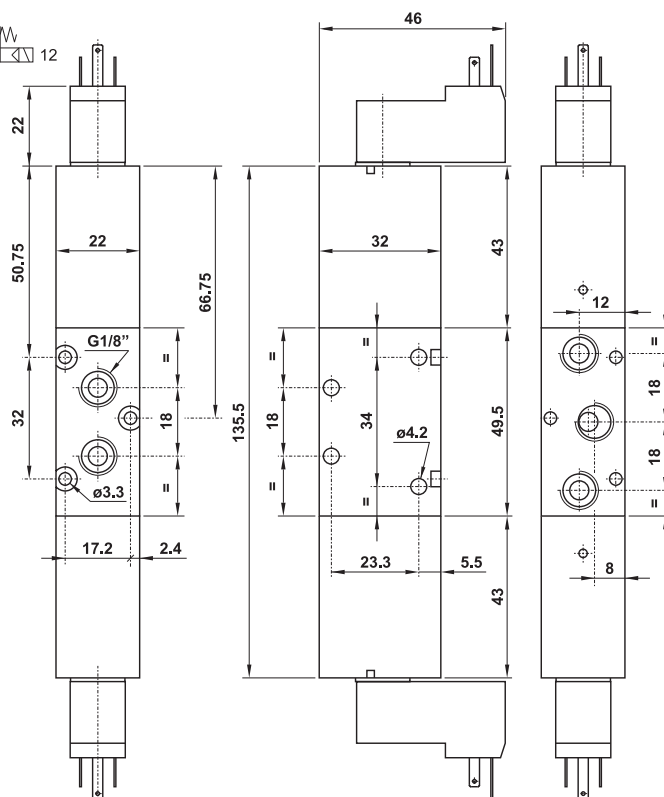
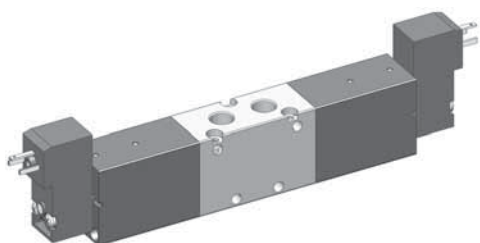
SOLO VERSIONE IN ALLUMINIO

ONLY ALUMINIUM VERSION

Nella sigla del prodotto sostituire le lettere "xx" con l'indicazione della tensione.

In the part number replace "xx" with the reference of the solenoid tension.

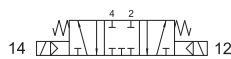
24V DC 01
24V 50/60Hz 02



La valvola è venduta con elettropilota/i montato/i (per i dati tecnici vedi pag. 191).

The valve is sold with mounted solenoid pilot(s); for technical data refer to page 191.

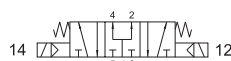
5223C EE MIC xx centri chiusi
closed centres



5223A EE MIC xx centri aperti
open centres



5223P EE MIC xx centri in pressione
pressurized centres



5/3 1/4" doppio comando elettrico con elettropilota 15 mm

5/3 1/4" with double 15 mm solenoid pilot

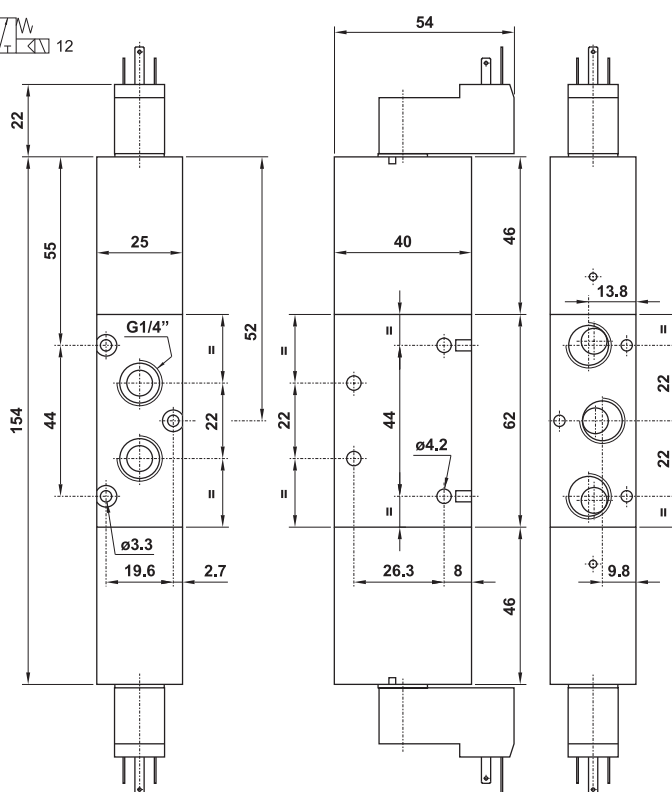
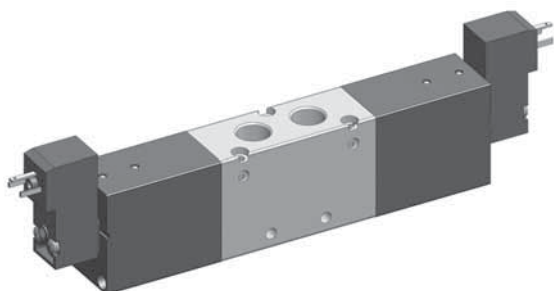
SOLO VERSIONE IN ALLUMINIO

ONLY ALUMINIUM VERSION

Nella sigla del prodotto sostituire le lettere "xx" con l'indicazione della tensione.

In the part number replace "xx" with the reference of the solenoid tension.

24V DC 01
24V 50/60Hz 02



La valvola è venduta con elettropilota/i montato/i (per i dati tecnici vedi pag. 191).

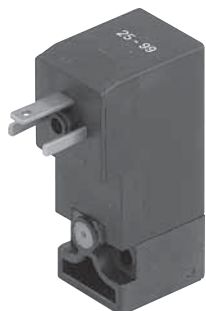
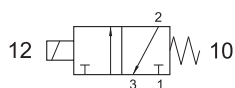
The valve is sold with mounted solenoid pilot(s); for technical data refer to page 191.

elettropiloti e connettori 15 mm

15 mm solenoids and connectors



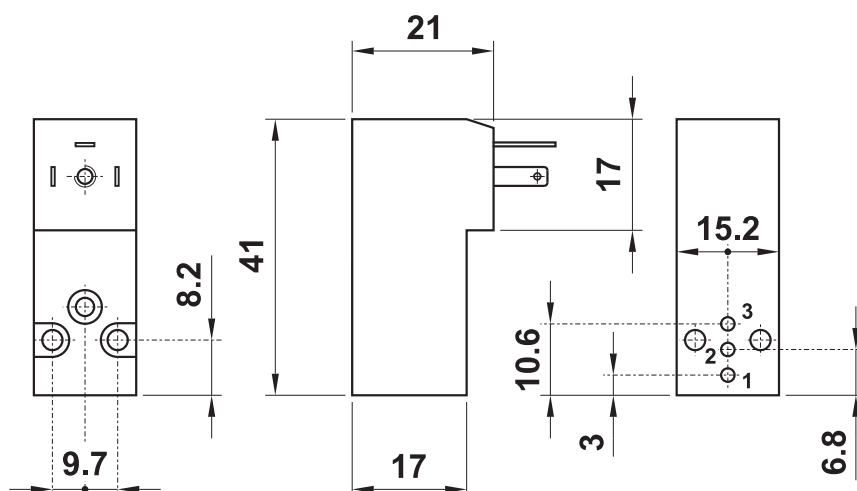
15 mm



funzione della valvola	3/2 NC	valve function
diametro nominale	1.1 mm	nominal orifice
portata 1-2	30 Nl/min	flow rate 1-2
portata 2-3	35 Nl/min	flow rate 2-3
pressione di esercizio	max 10 bar	working pressure
durata cicli	100x10 ⁶	life time (cycles)
tempo di risposta	10 ms	response time
temperatura max di esercizio	+50°C	max working temperature
inserimento	ED 100%	duty cycle
consumo a regime	DC: 2W AC: 1.3VA	rated power consumption
protezione	IP 51	protection
tolleranza di tensione	-10%; +15%	tension tolerance

- Connessione elettrica: DIN 43650 forma C
Electrical connection: DIN 43650, C form
- Con azionatore manuale monostabile
With non-detented manual override

codice code	tensione tension
00.253.0	12V DC
00.254.0	24V DC
00.255.0	24V 50/60Hz
00.256.0	110V 50/60Hz
00.257.0	220V 50/60Hz



ACCESSORI - accessories

piastrina con guarnizione
mounting plate with gasket

00.414.0



vite di fissaggio (sono necessarie 2 viti)
mounting screw (2 screws are necessary)

00.413.0



codice code	colore colour	cavo cable	tipo type
00.252.0	nero black	PG07	normale standard
00.340.0	trasparente transparent	PG07	con LED 24V with LED 24V
00.341.0	trasparente transparent	PG07	con LED 24V e VDR with LED 24V and VDR
00.342.0	trasparente transparent	PG07	con LED 115V with LED 115V
00.343.0	trasparente transparent	PG07	con LED 115V e VDR with LED 115V and VDR
00.398.0	trasparente transparent	PG07	con LED 230V with LED 230V
00.399.0	trasparente transparent	PG07	con LED 230V e VDR with LED 230V and VDR

